

Wiring Diagram Type 968 Model 93

	Coordinates	
Sheet 1	1 - 10	Lights
Sheet 2	11 - 20	Instrument Cluster and Sensor
Sheet 3	21 - 30	Heating, Airconditioning, Ventilating, Power Seats, Wipe- and Wash Cleaners
Sheet 4	31 - 40	Two-Tone Horns, Mirrors, Lifting Roof, Power Window Regulator, Tailgate Unlocking
Sheet 5	41 - 50	Engine Compartment, Cruise Control
Sheet 6	51 - 60	Central Electric
Sheet 7	61 - 70	Central Locks, Alarm System
Sheet 8	71 - 80	Fog Light, Rear Fog Light
Sheet 9	81 - 90	Radio
Sheet 10	91 - 100	ABS, Airbag
Sheet 11	101 - 110	Wiring 968 Cabriolet
Sheet 12	111 - 120	Tiptronic
Sheet 13		Construction Components
Sheet 14		Plug Connections, Ground Points, M-Numbers, Abbreviations
Sheet 15		Wiring 968 CS

Wiring Diagram Type 968

Model 93

The wiring diagram consists of 12 individual wiring diagrams, 1 sheet construction components and 1 sheet plug connections and ground points. These are divided into coordinate fields.

Each individual wiring diagram contains a part of the central-electrics box in a dashdotted frame.

This part of the central-electrics box shows all the lines and relays necessary for the individual wiring diagram.

The earth/ground points are identified by "GP" and their location is shown in a vehicle diagram.

The 20-pin connectors on the central-electrics box are clipped together out of 5 parts.

Part 1, with the moduled-on fastening lug, is the "starting element".

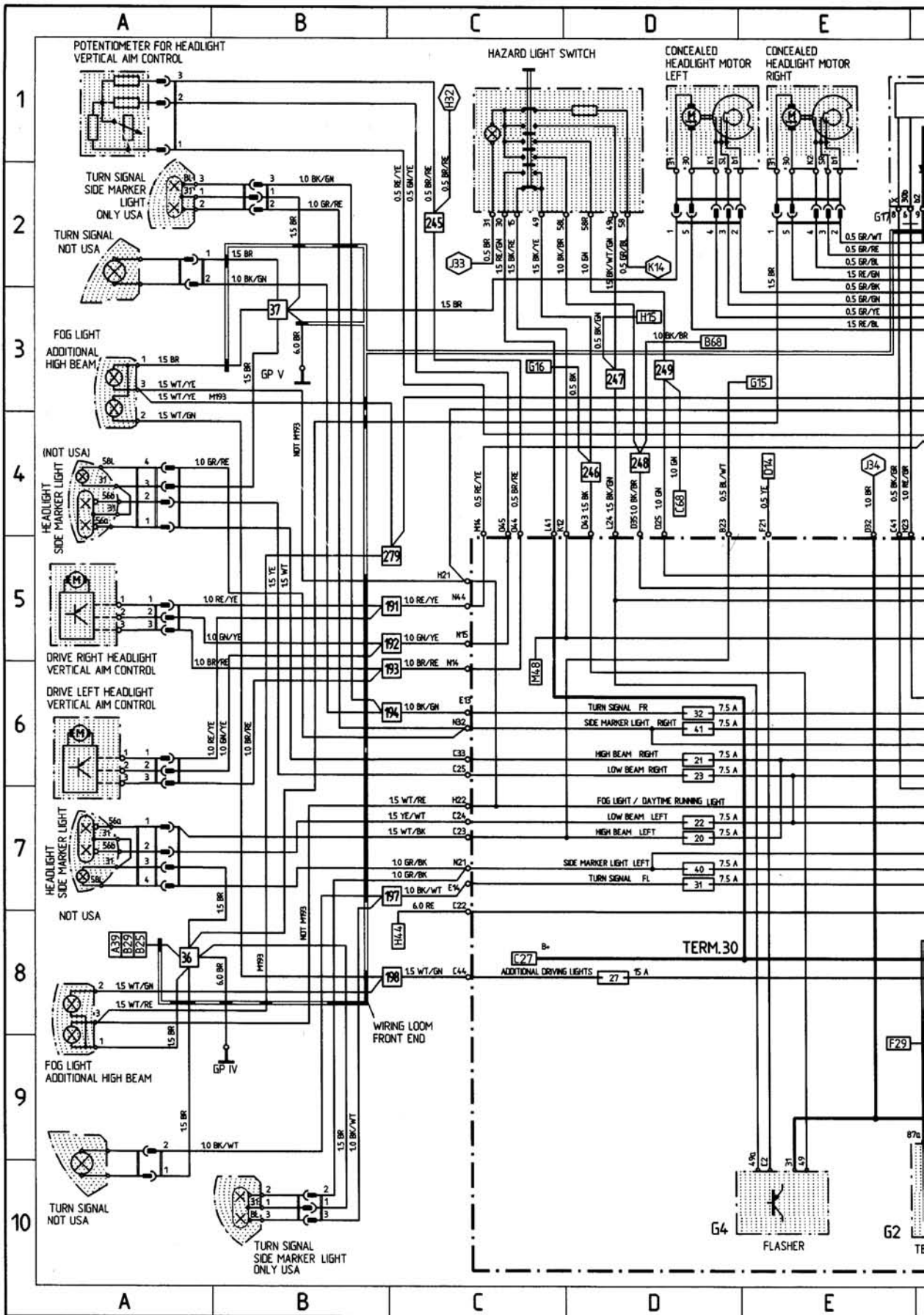
Parts 2, 3 and 4 are "module elements".

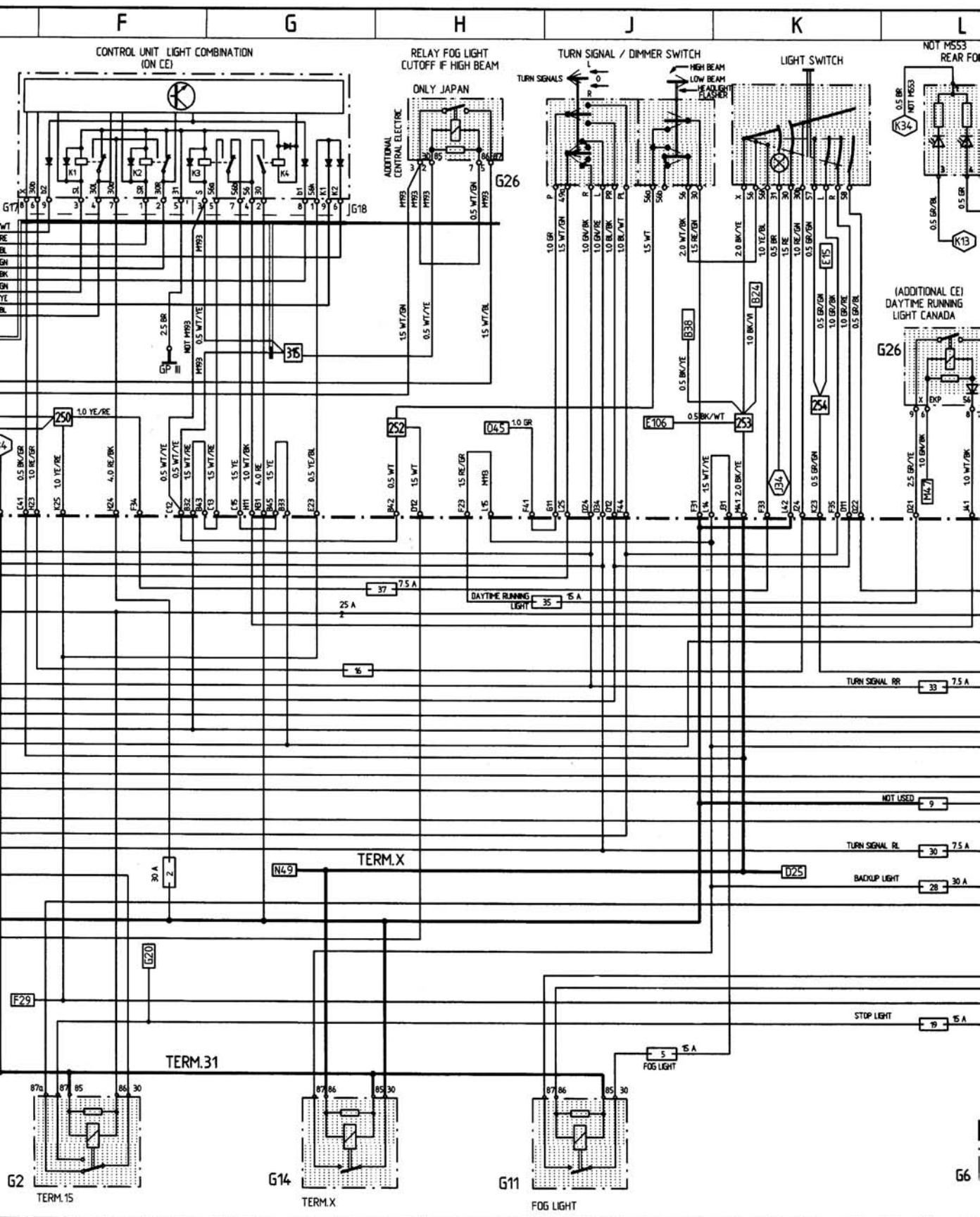
Parts 1 to 4 are identified by the numbers 1.....5.

Part 5 is a "coding element".

The designations of the plug connections in the wiring diagram of the central-electrics box refer to the "starting element" from, for example, B 11.....15, and to the first module element from B 21.....25.

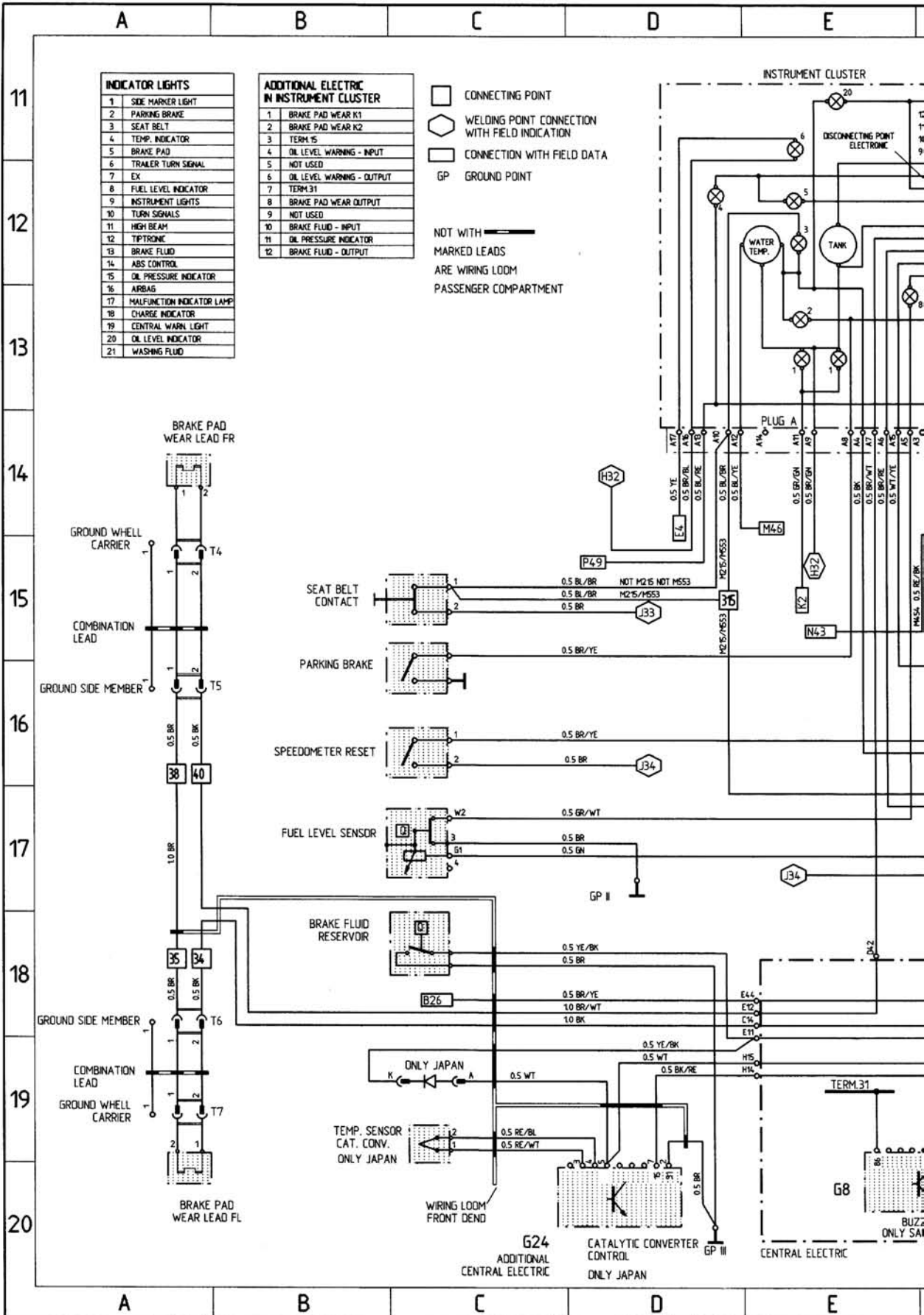
LIGHTS

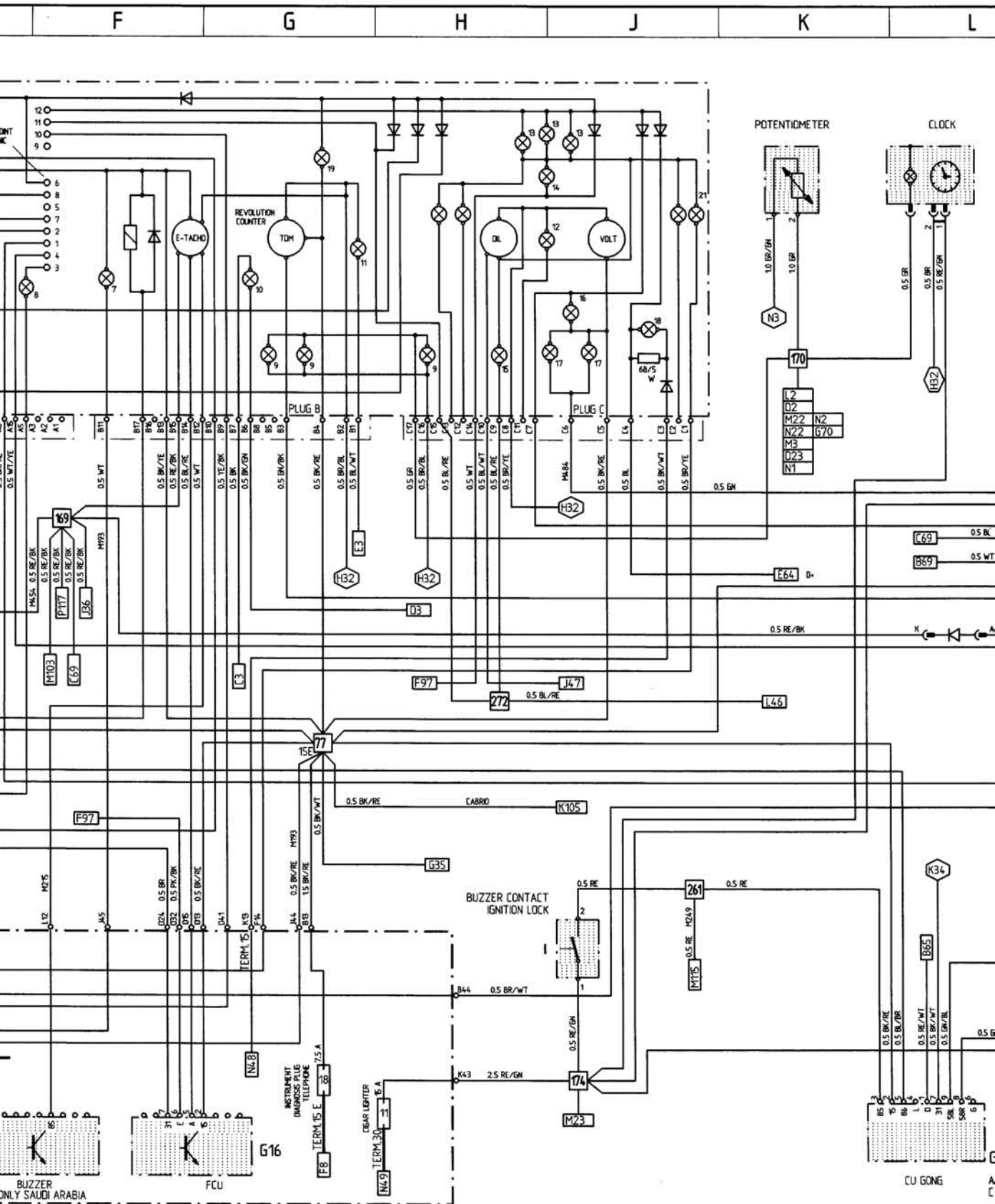




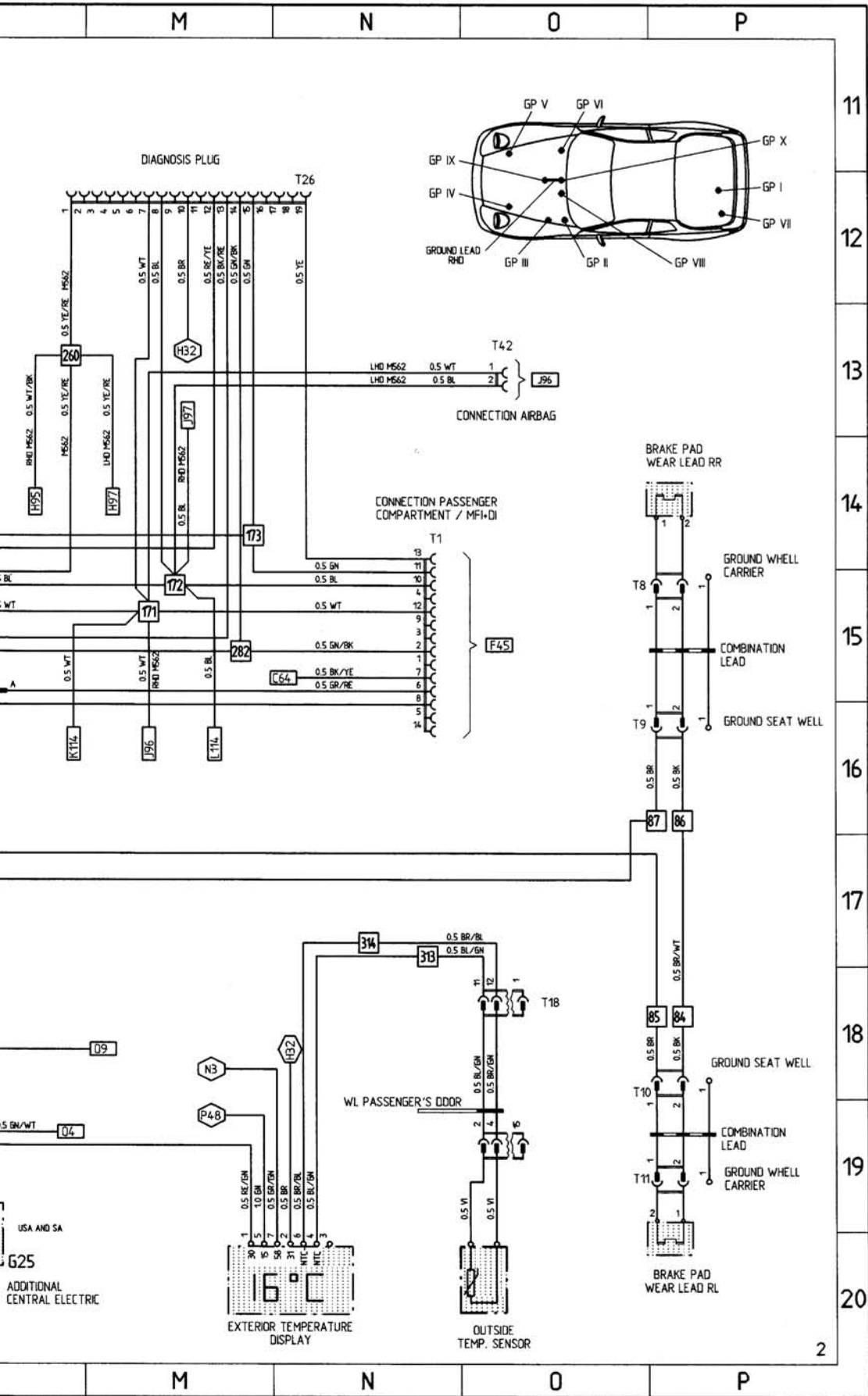
WT = WHITE YE = YELLOW RE = RED VI = VIOLET BL = BLUE GN = GREEN GR = GREY BR = BROWN BK = BLACK

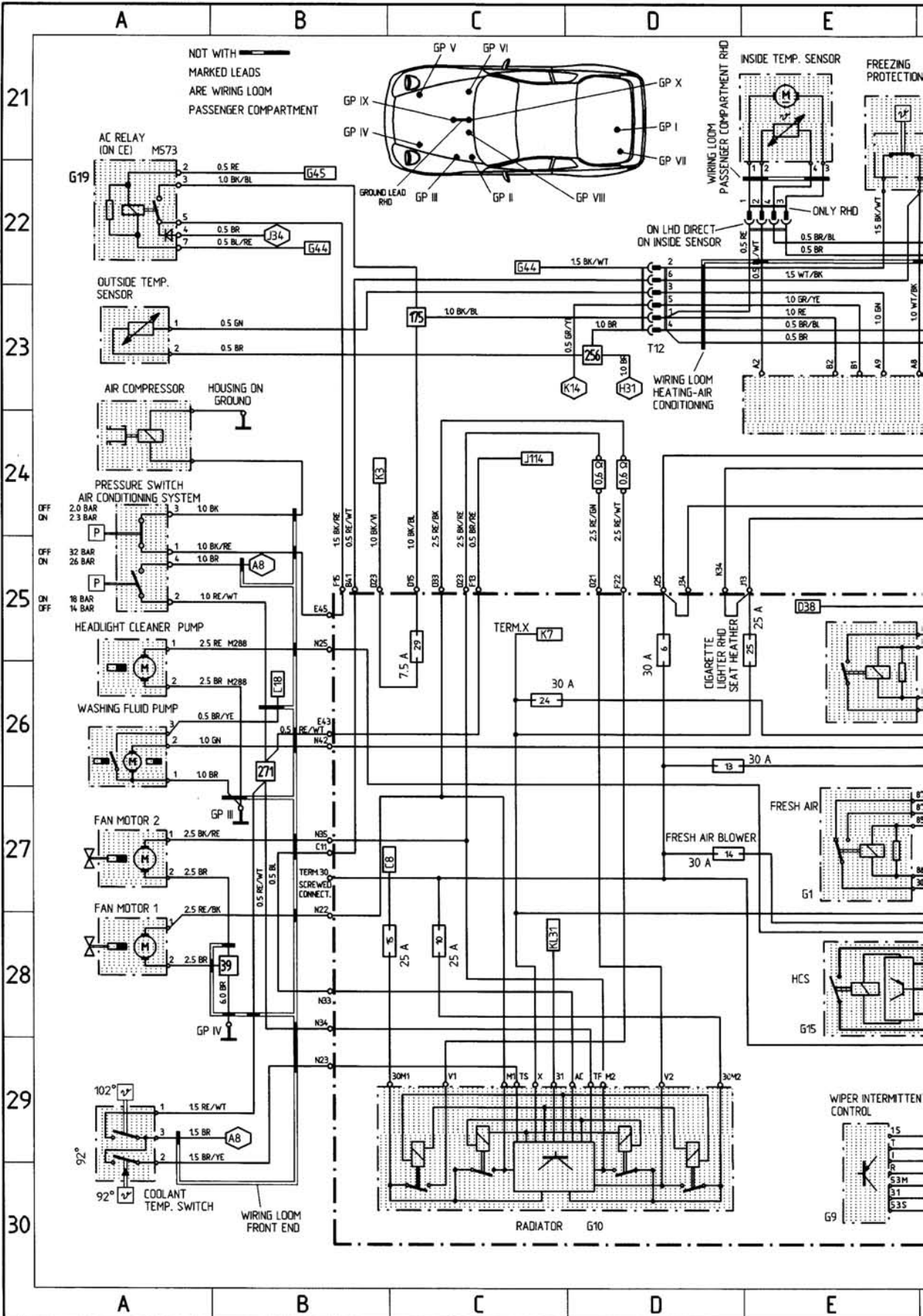
INSTRUMENT CLUSTER AND SENSOR

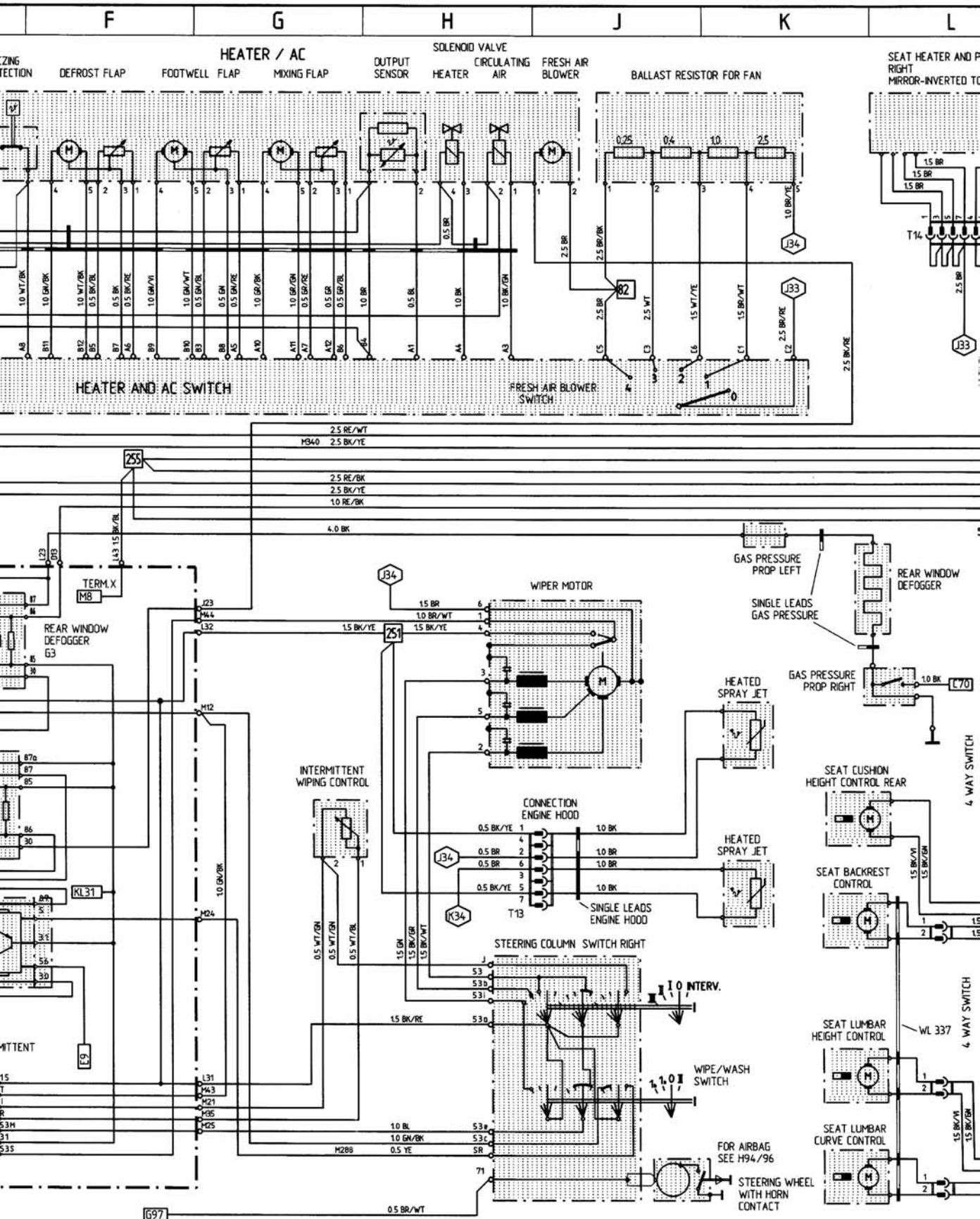




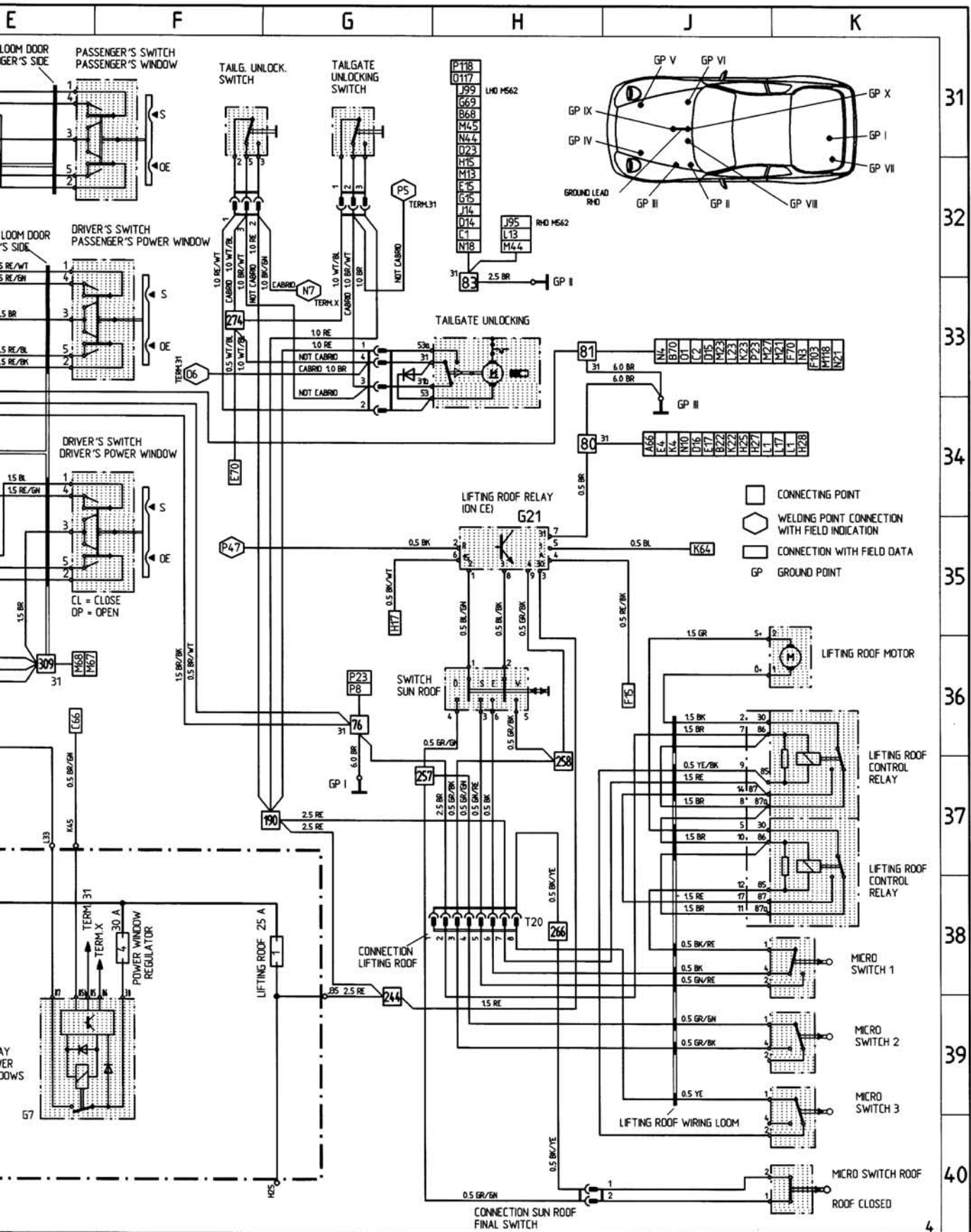
WT = WHITE YE = YELLOW RE = RED VI = VIOLET BL = BLUE GN = GREEN GR = GREY BR = BROWN BK = BLACK







WT = WHITE YE = YELLOW RE = RED VI = VIOLET BL = BLUE GN = GREEN GR = GREY BR = BROWN BK = BLACK

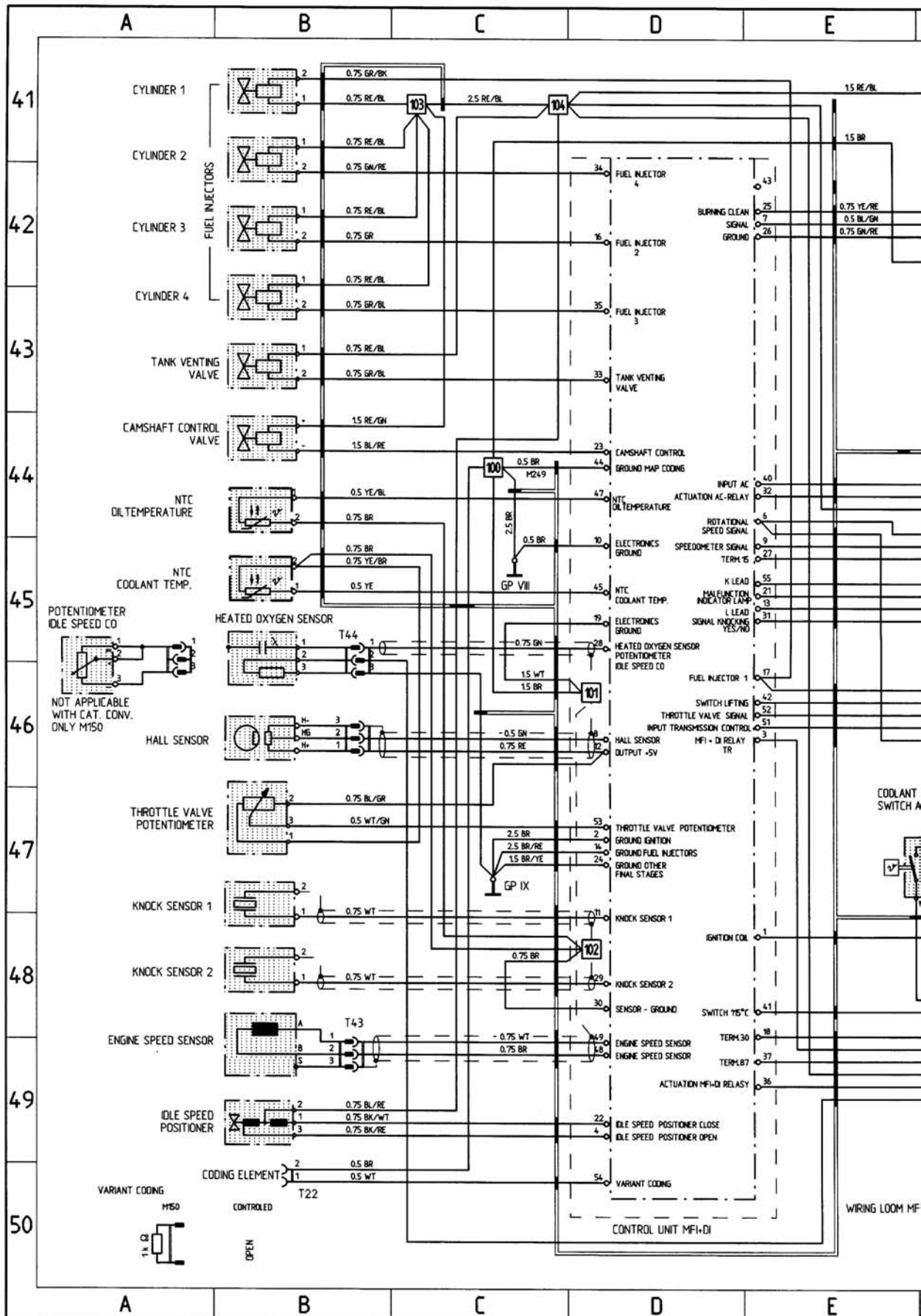


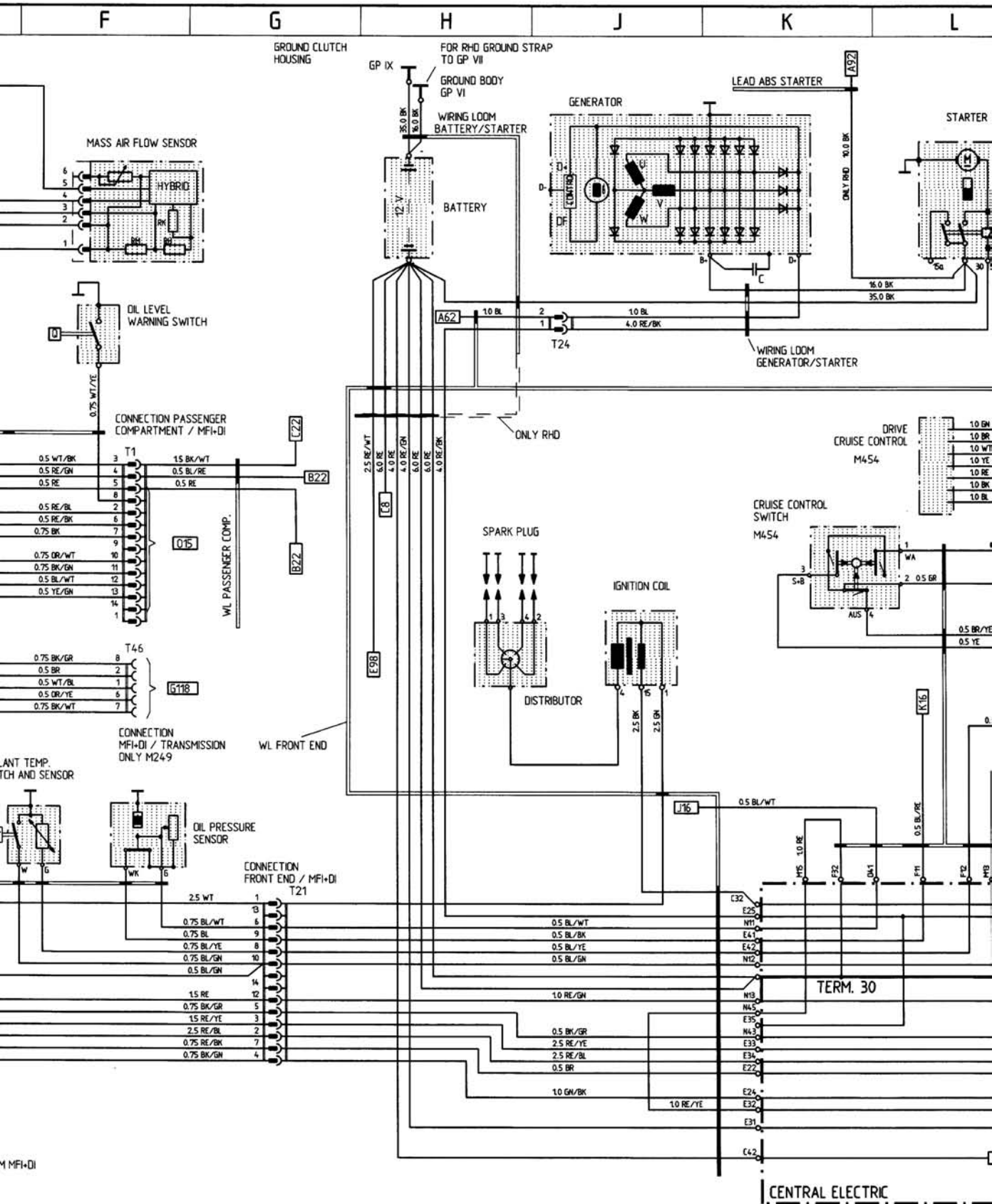
E F G H J K

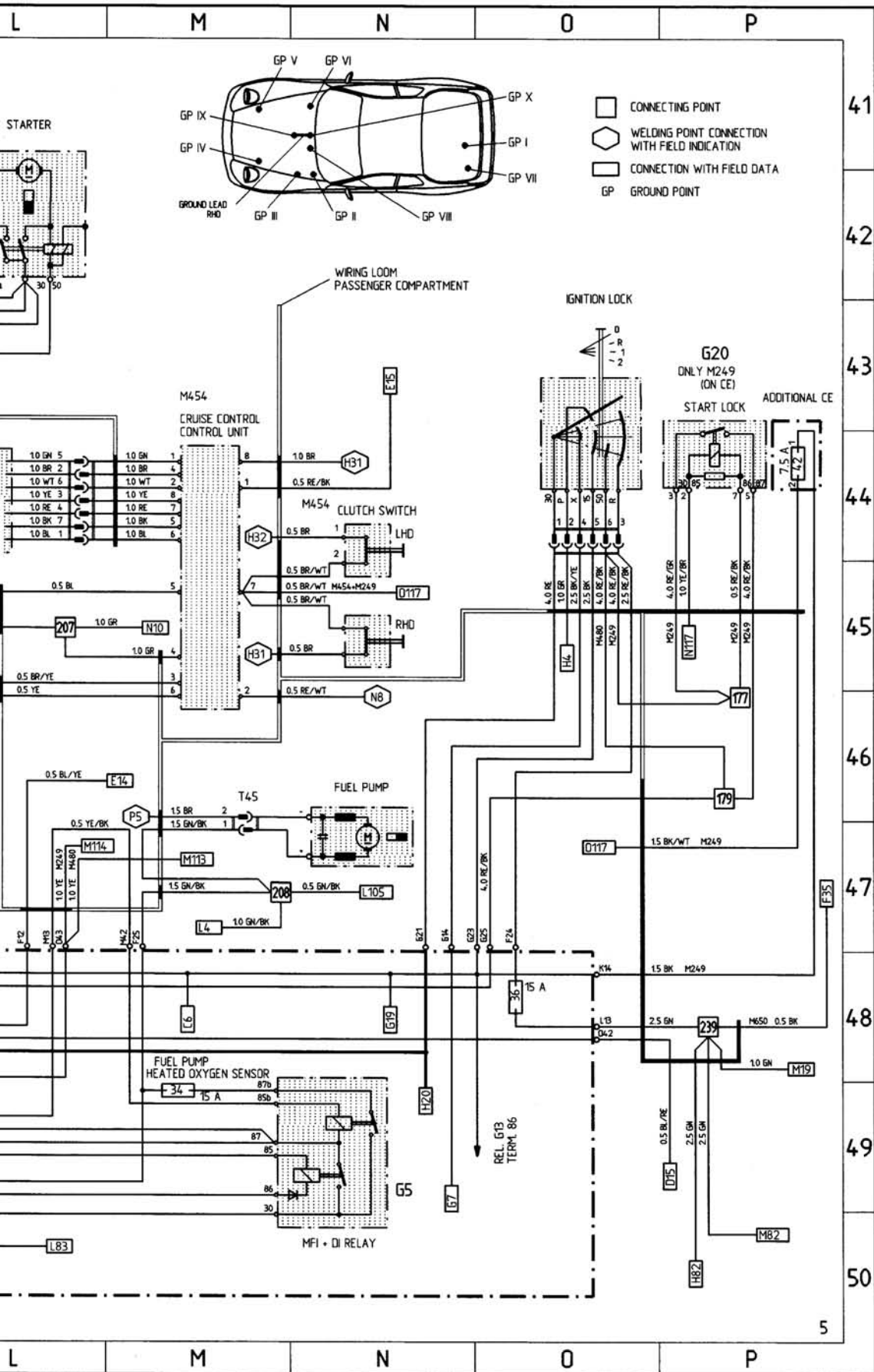
WT = WHITE YE = YELLOW RE = RED VI = VIOLET BL = BLUE
 GN = GREEN GR = GREY BR = BROWN BK = BLACK

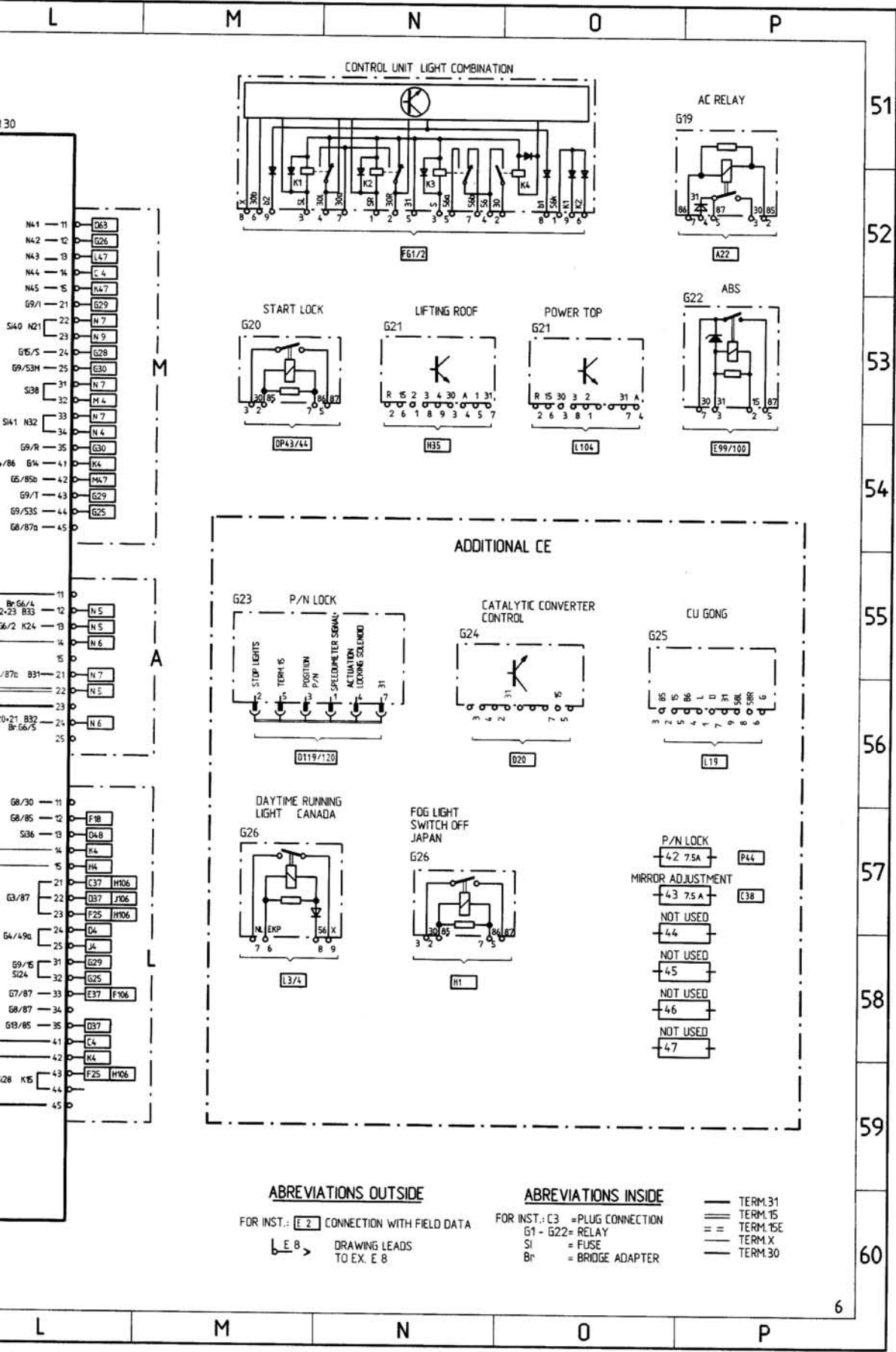
968 MODEL 93 SHEET 5

ENGINE COMPARTMENT, CRUISE CONTROL









ABBREVIATIONS OUTSIDE

FOR INST.: [E 2] CONNECTION WITH FIELD DATA

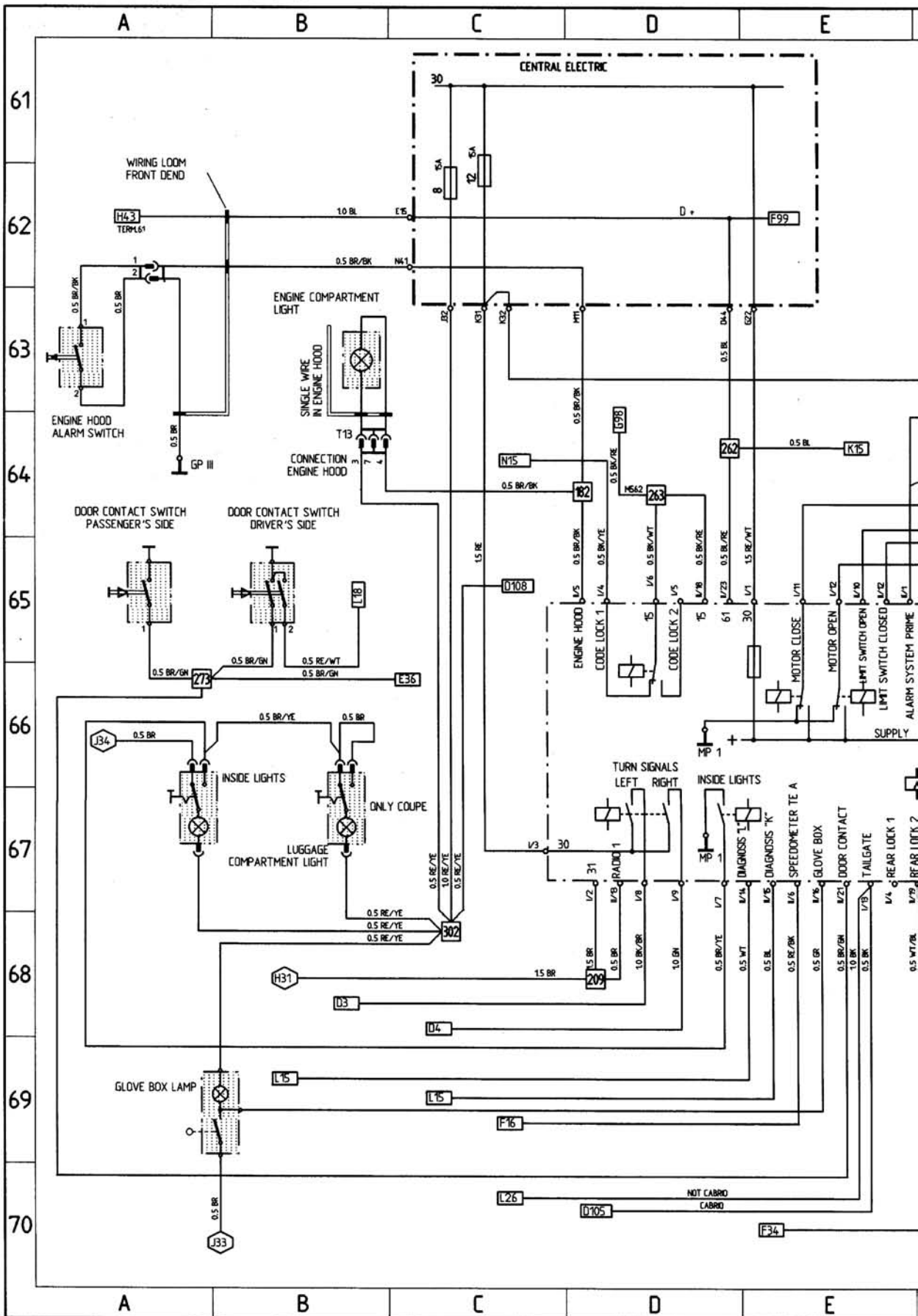
[E 8] DRAWING LEADS TO EX. E 8

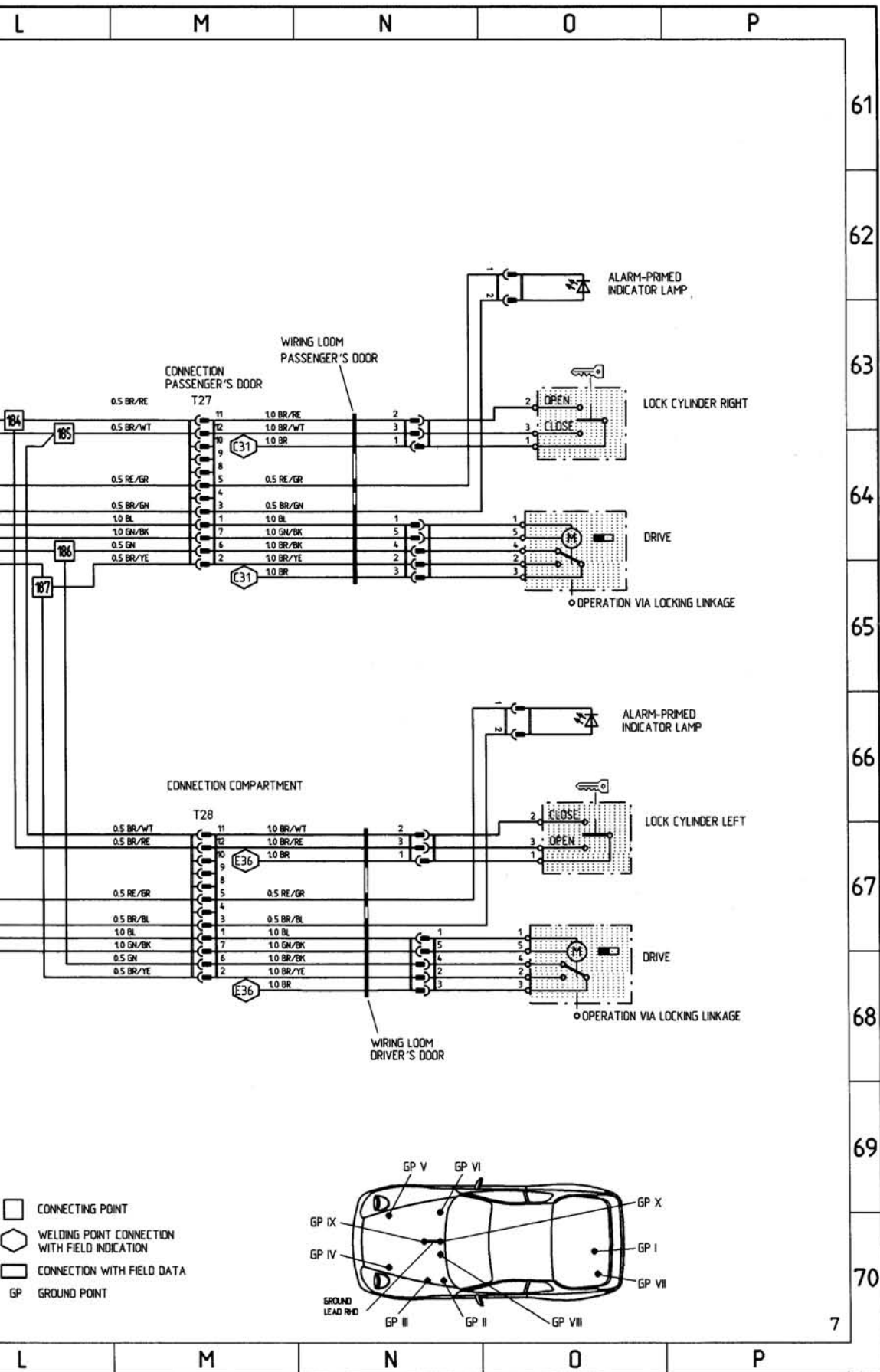
ABBREVIATIONS INSIDE

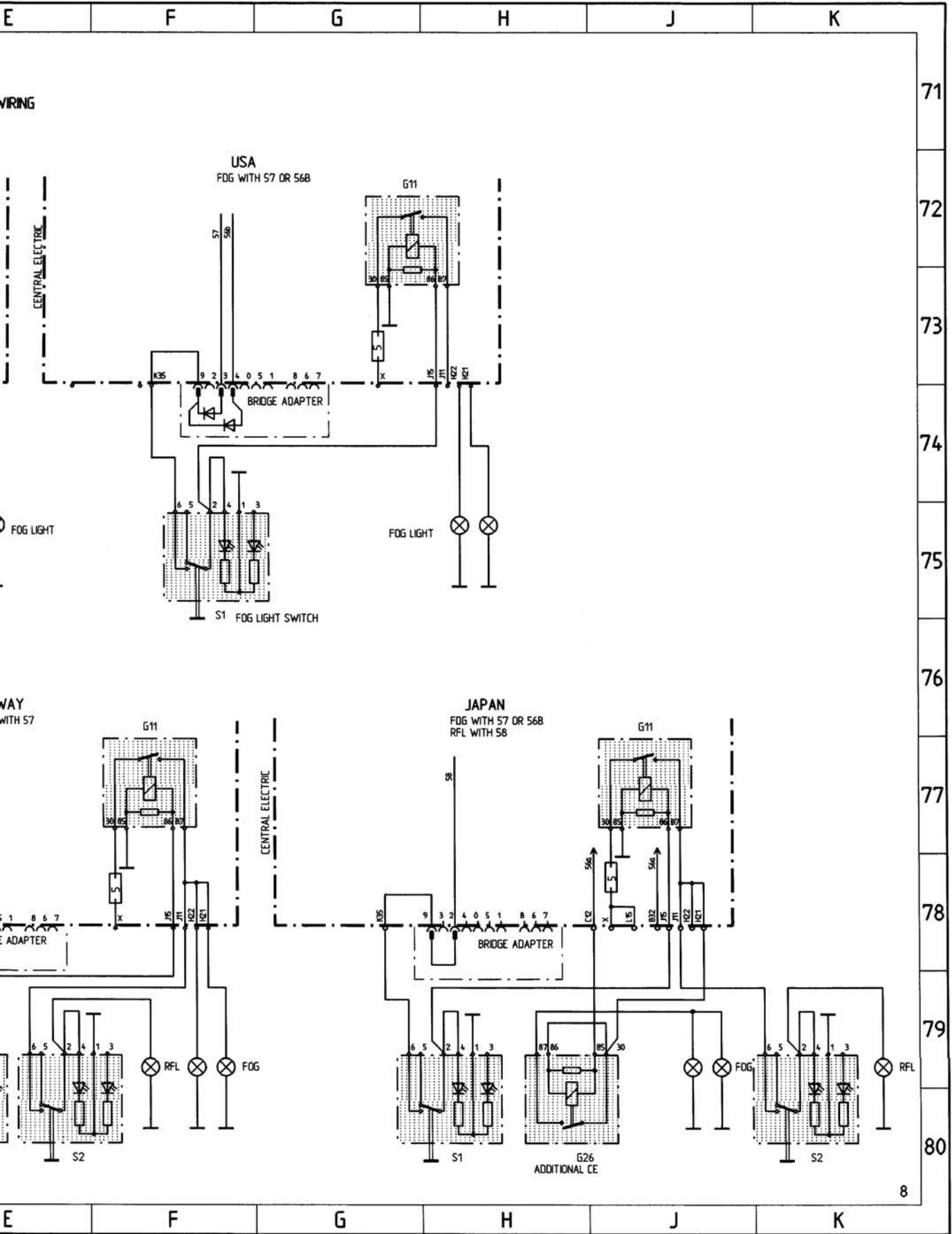
FOR INST.: C3 = PLUG CONNECTION
 G1 - G22 = RELAY
 SI = FUSE
 Br = BRIDGE ADAPTER

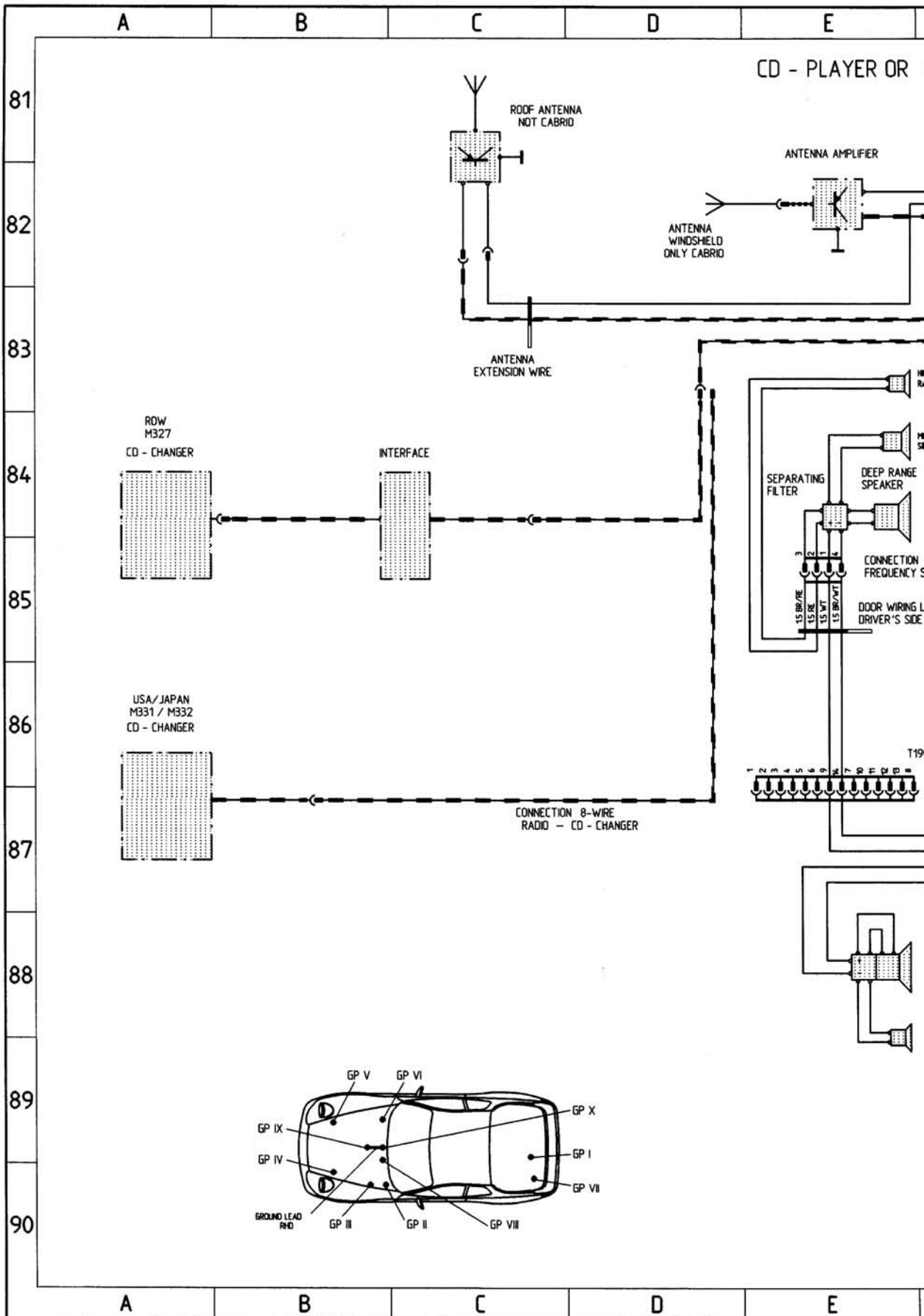
— TERM. 31
 = TERM. 15
 = TERM. 15E
 = TERM. 1 X
 = TERM. 30

CENTRAL LOCKS, ALARM SYSTEM

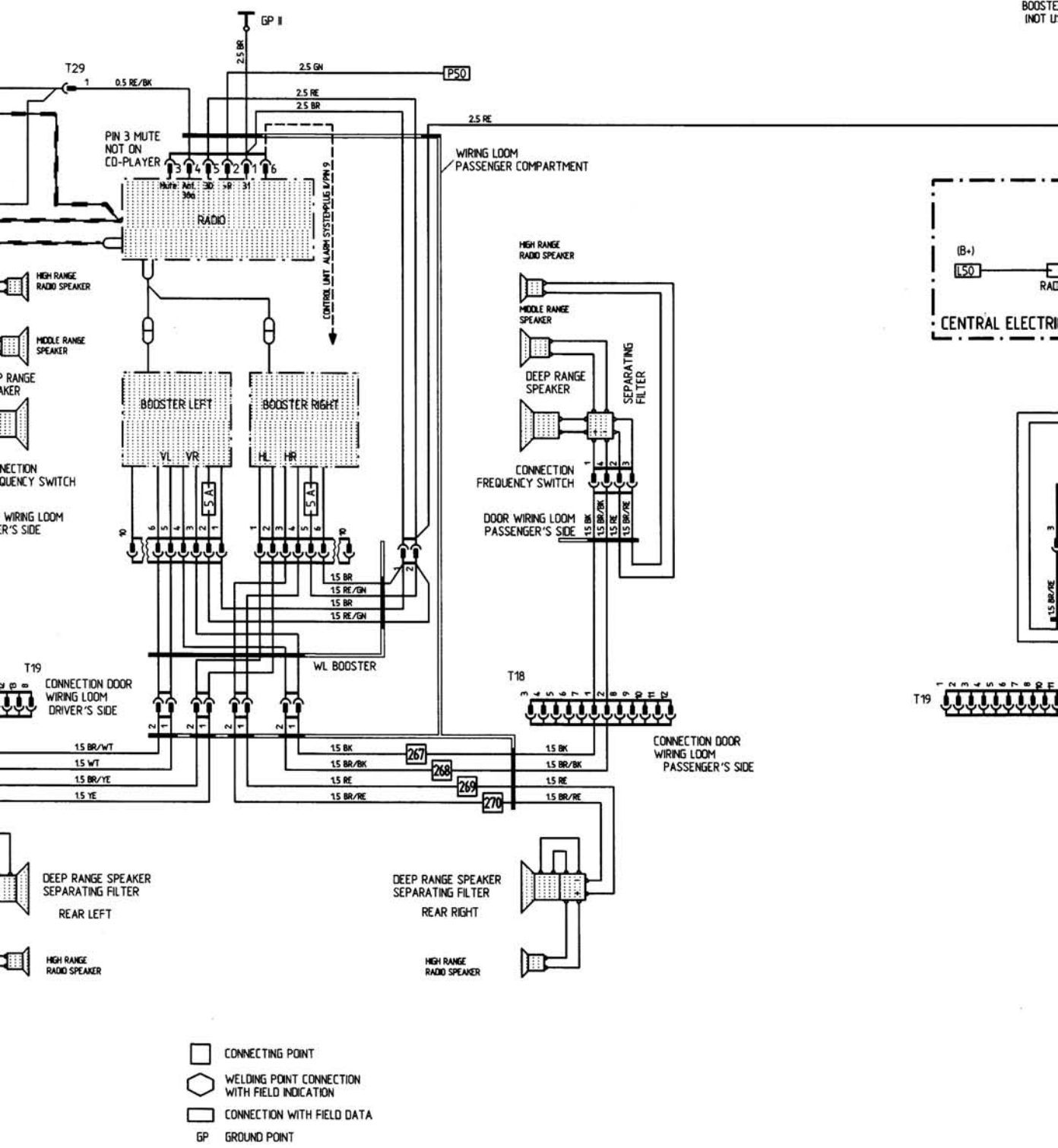




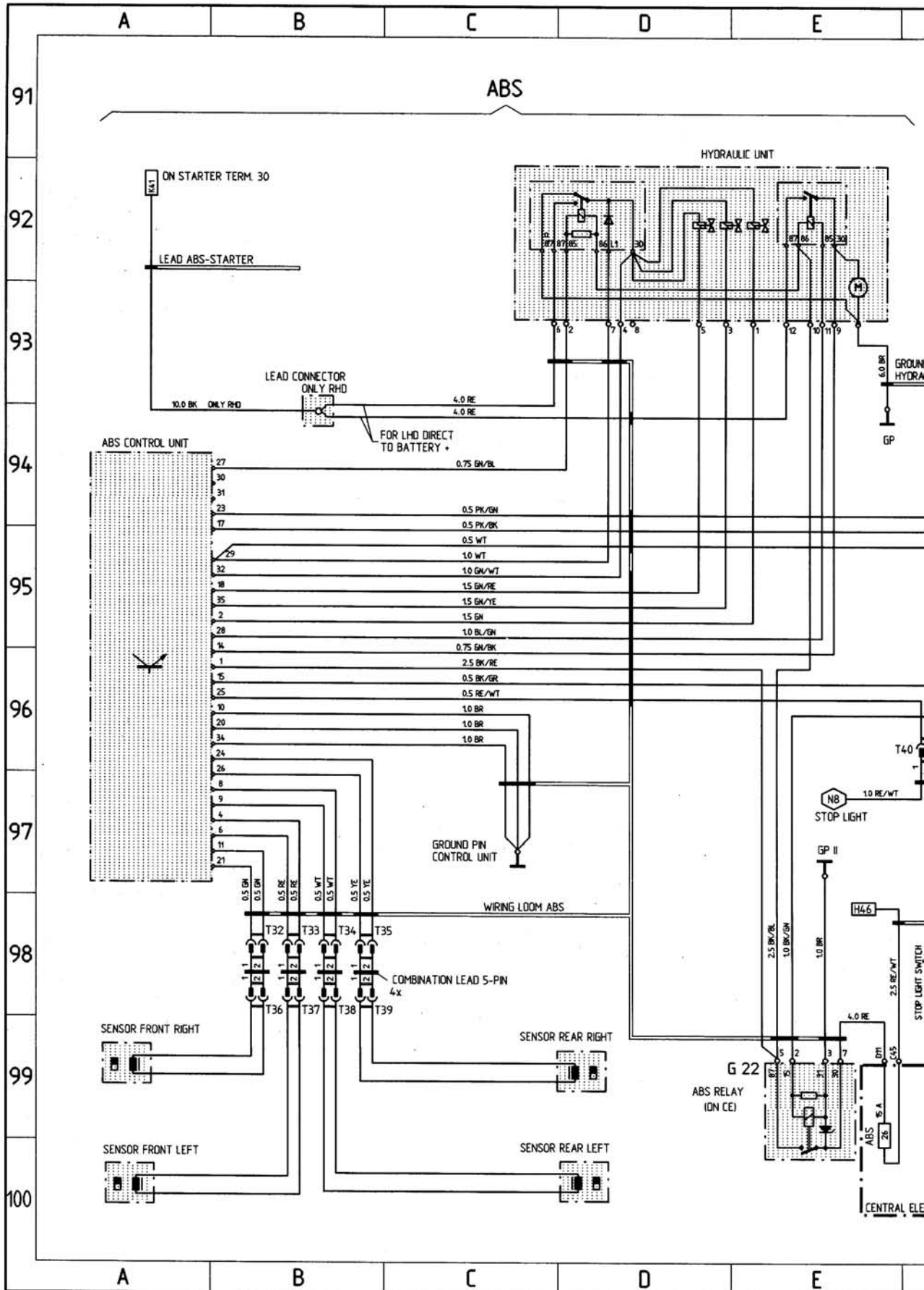


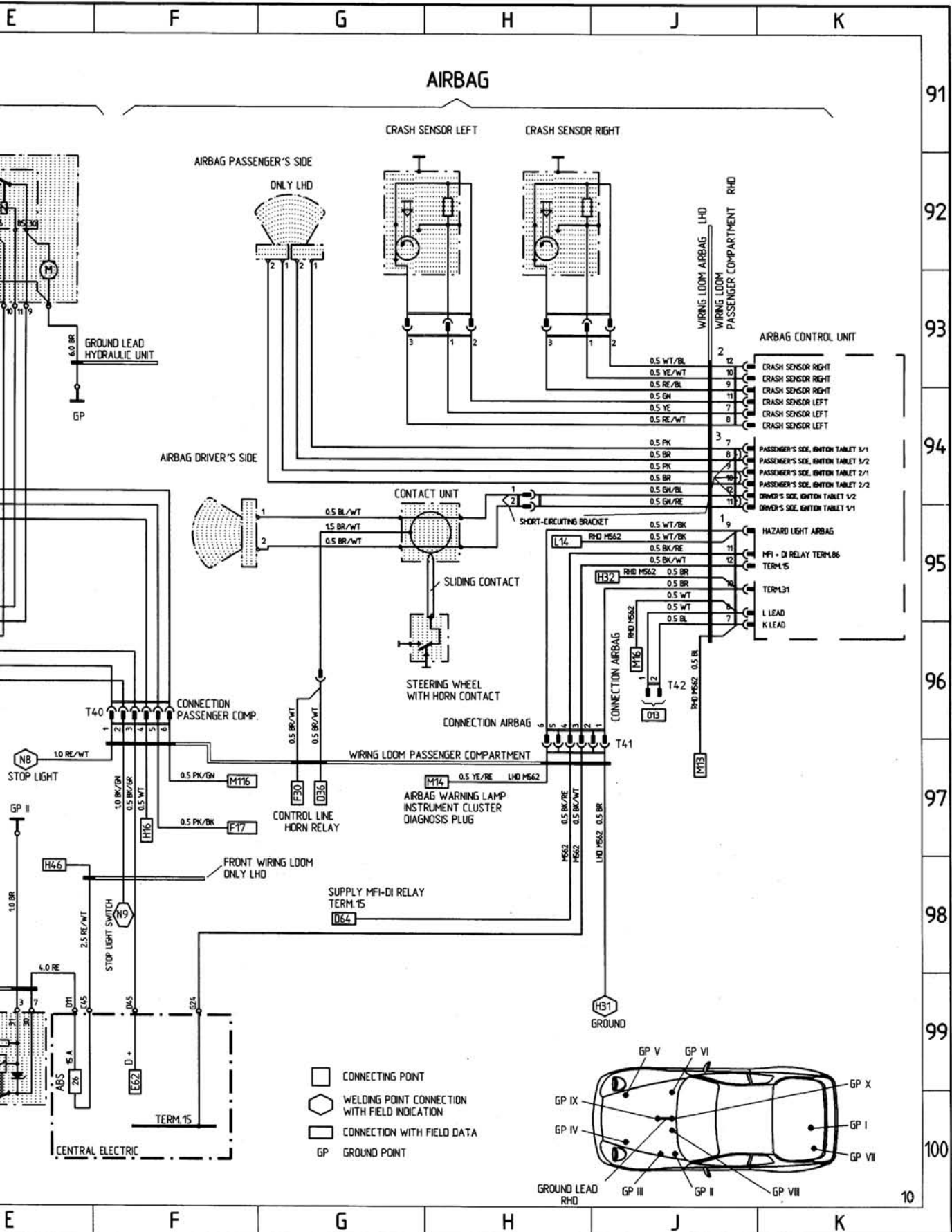


OR RADIO WITH 4 FINAL STAGES AND EQUALIZER WITH HI-FI SPEAKERS



ABS, AIRBAG

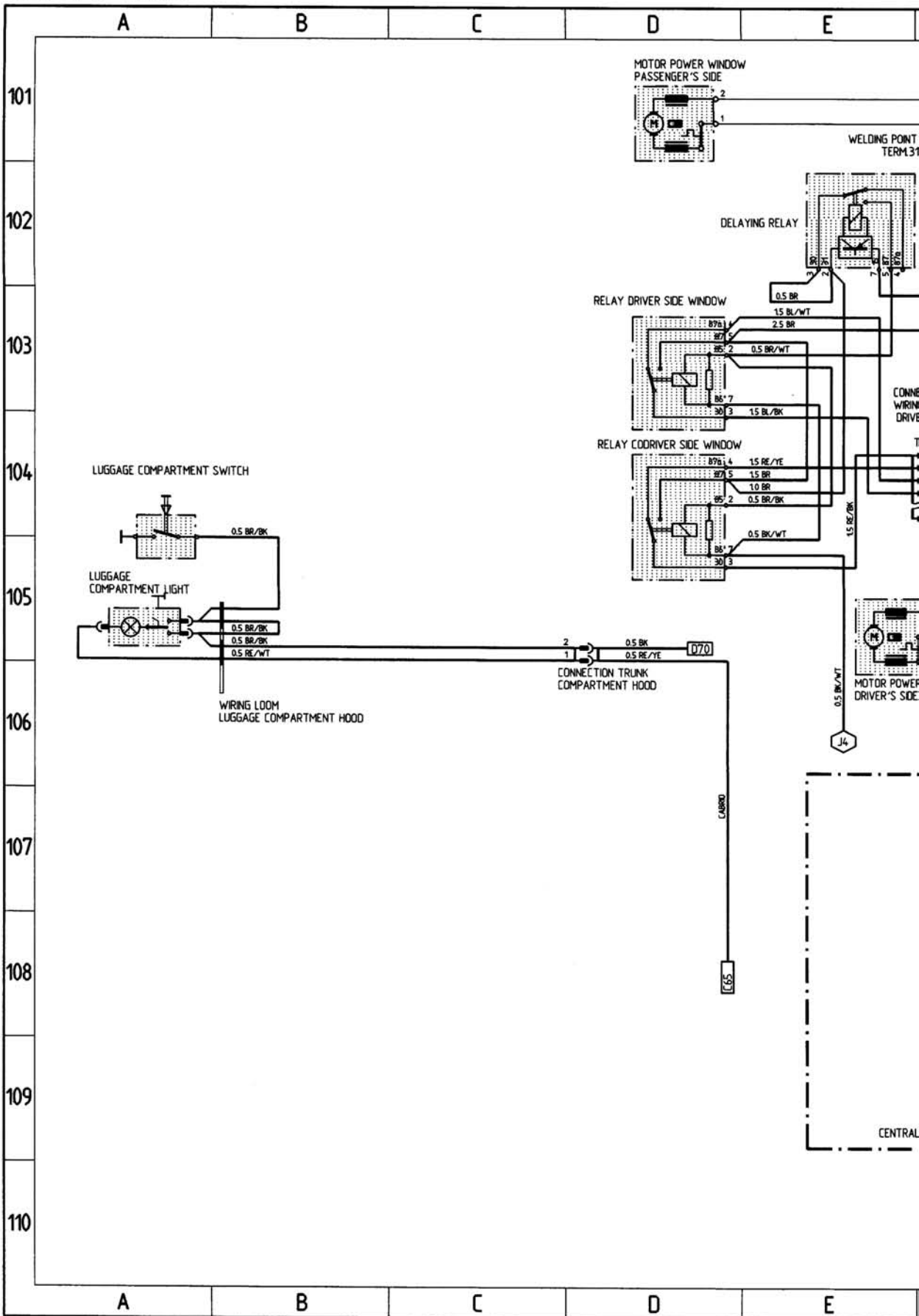


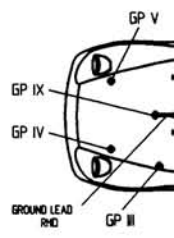
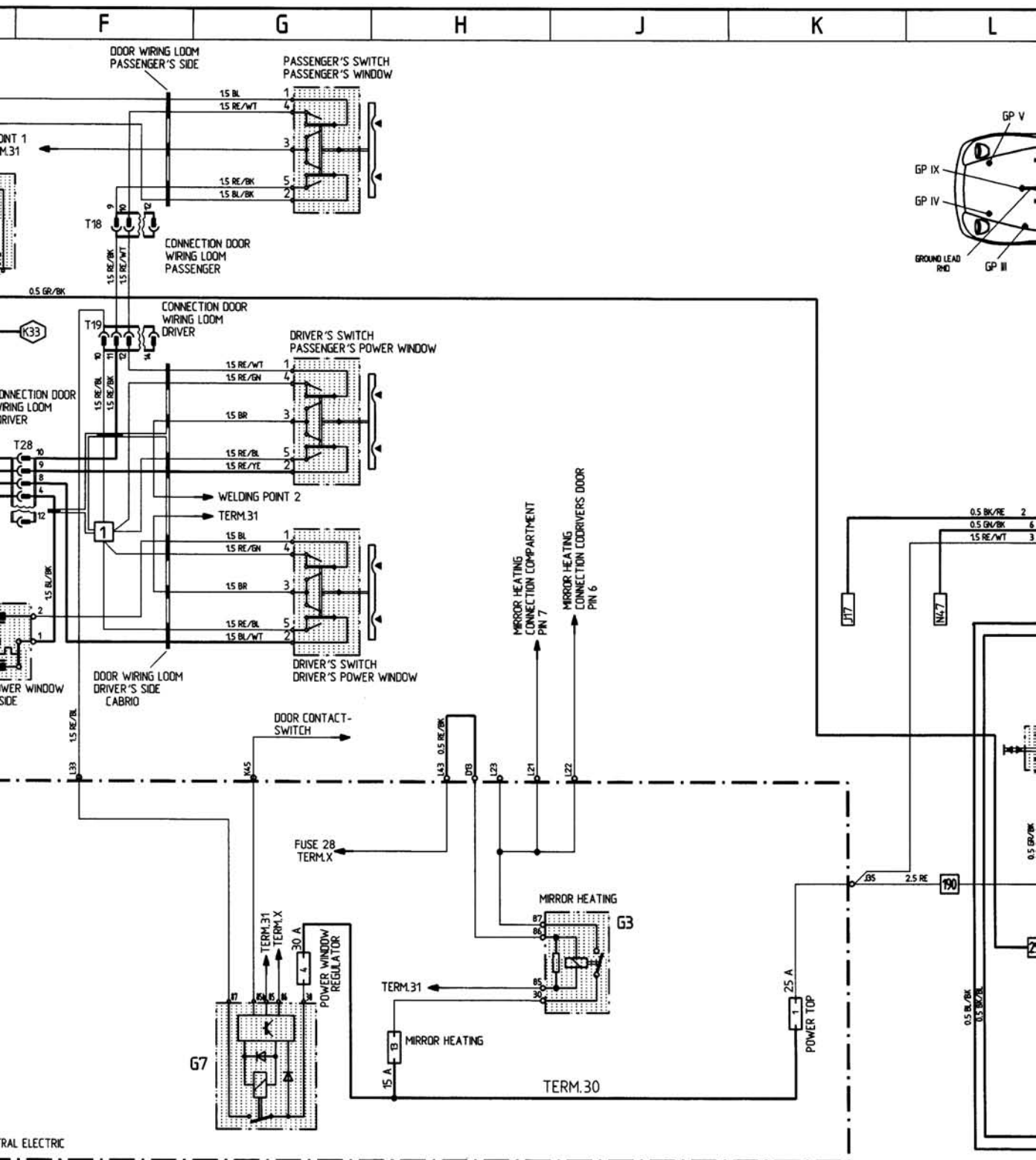


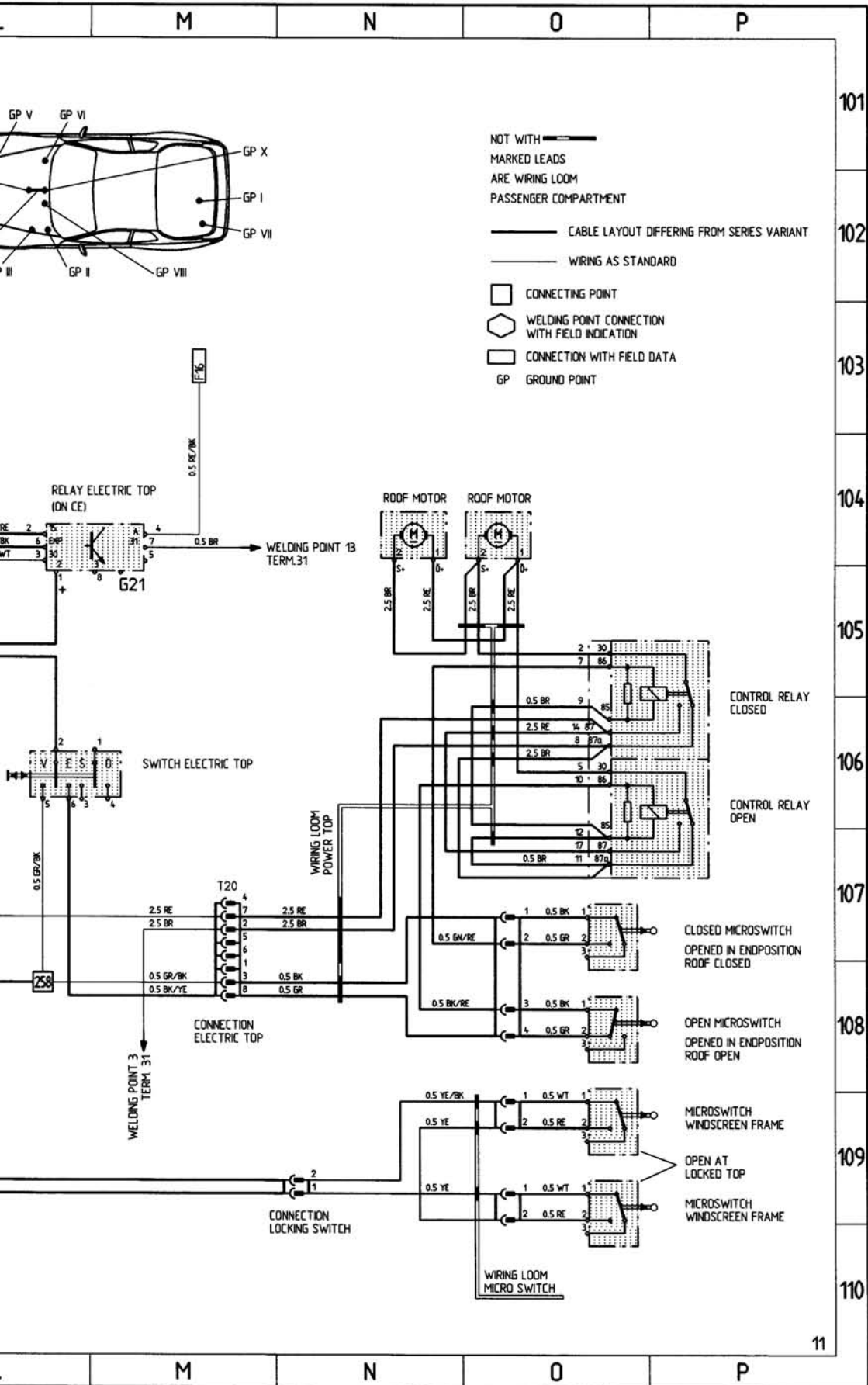
WT = WHITE YE = YELLOW RE = RED VI = VIOLET BL = BLUE
 GN = GREEN GR = GREY BR = BROWN BK = BLACK

968 Cabrio MODEL 93 SHEET 11

WIRING 968 CABRIO

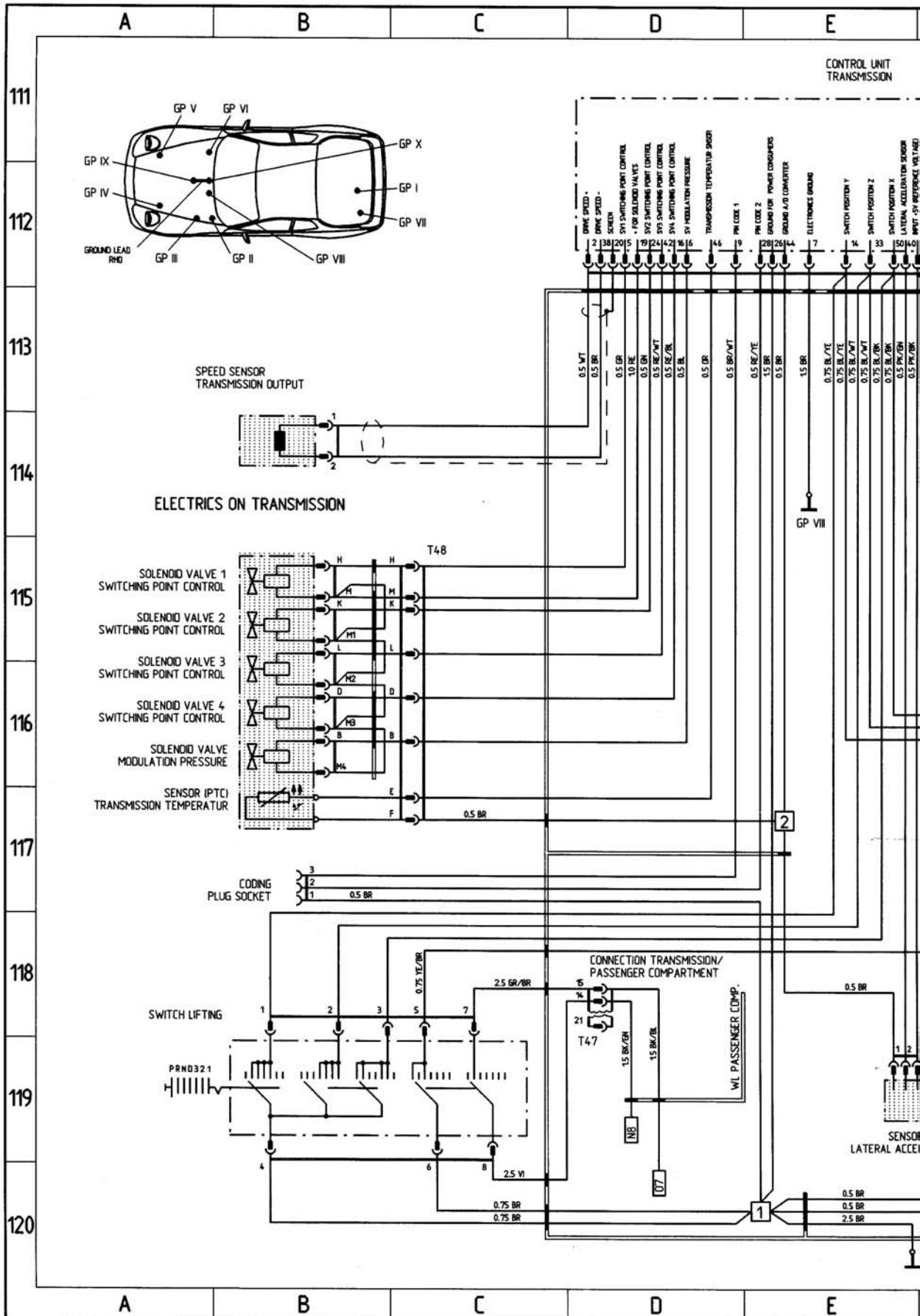


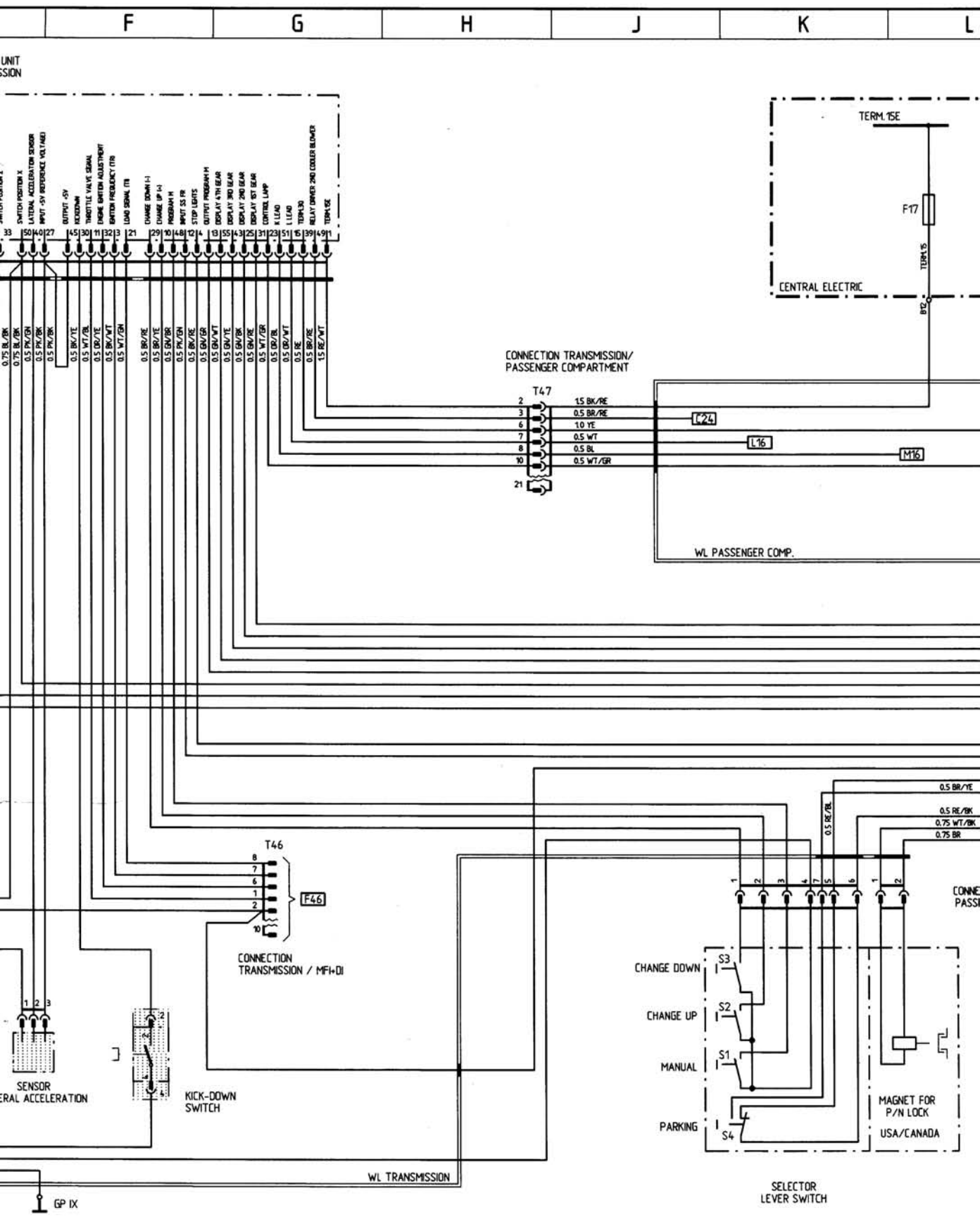




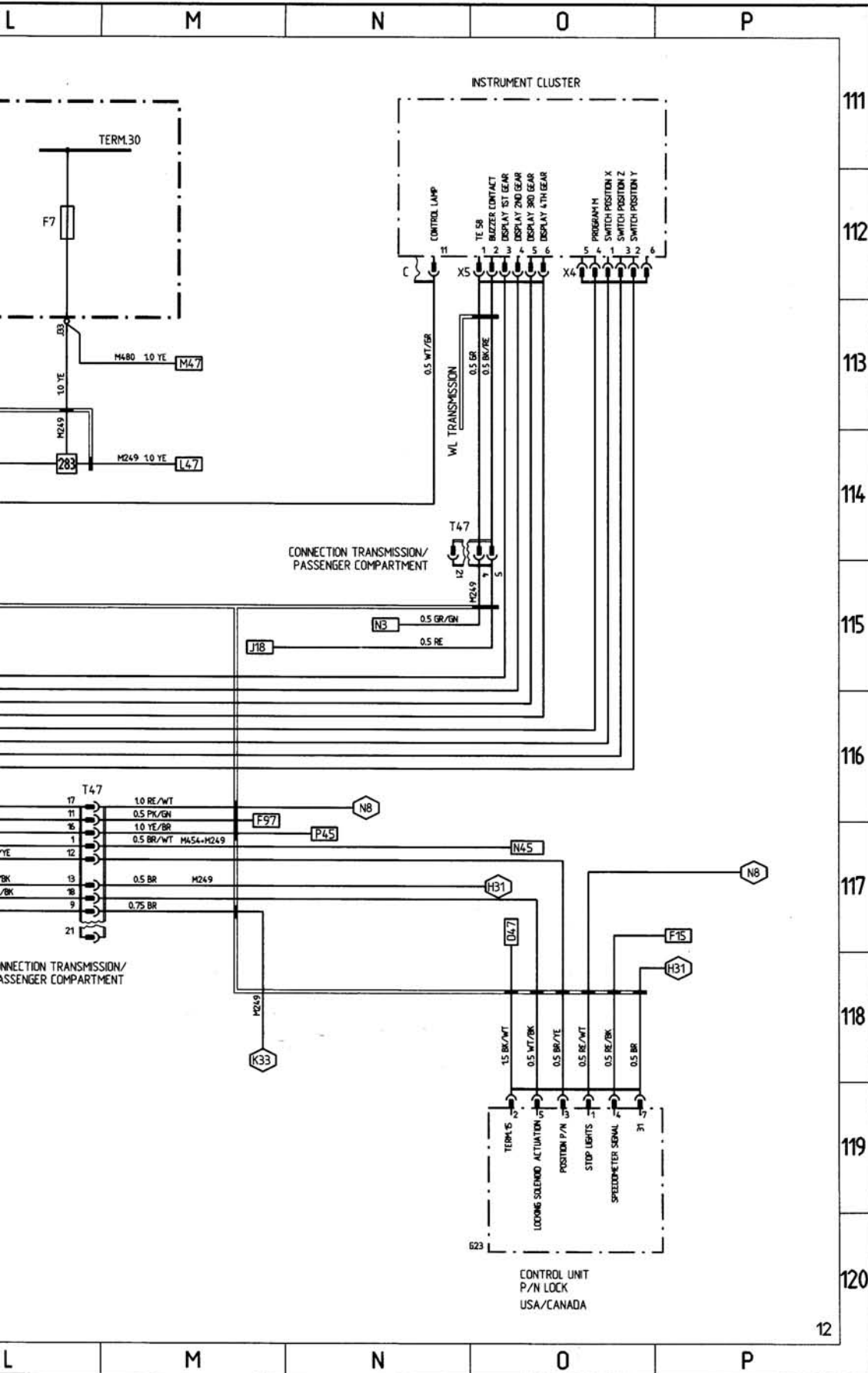
968 MODEL 93 SHEET 12

CONTROL UNIT AUTOMATIC TRANSMISSION





WT = WHITE YE = YELLOW RE = RED VI = VIOLET BL = BLUE GN = GREEN GR = GREY BR = BROWN BK = BLACK



968 MODEL 93 SHEET 13

CONSTRUCTION COMPONENTS

CONSTRUCTION COMPONENTS		POSITION IN VEHICLE		NOTE	FIELD IN WIRING DIAGRAM
DESIGNATION, FUNCTION		LHD	RHD		
ADDITIONAL CE	6cP	—		LEFT TO STEERING COLUMN	SHEET 6
ADDITIONAL CE	—	6cQ		LEFT TO GLOVE BOX	SHEET 6
AIR COMPRESSOR	3dO	3dO		ON ENGINE	A24
ALARM-PRIMED INDICATOR LAMP LEFT	12bR	12bR		IN PUSH-BUTTON OF LEFT DOOR	O66
ALARM-PRIMED INDICATOR LAMP RIGHT	12bK	12bK		IN PUSH-BUTTON OF RIGHT DOOR	O62
ALARM HORN	7bL	7bL		IN WATER BOX	F69
ALARM SWITCH ENGINE HOOD	2cO	2cO		ENGINE HOOD LOCK	A63
ANTENNA AMPLIFIER	7cL	7cL		IN FOOTWELL, RIGHT SIDE	E82,083
BATTERY	6cL	—		IN WATER BOX	H42
BATTERY	—	16cR		IN LEFT BOHLMANN COMPARTMENT	H42
BUZZER CONTACT	8cP	8cM		ON IGNITION LOCK	J18
CABRIO: ROOF MOTORS	14cN/D	14cN/O		BELOW THE PARCEL TRAY	N/D104
CABRIO: MOTOR POWER WINDOW PASSENGER'S SIDE	9dK	9dR		IN PASSENGER'S DOOR	D101
CABRIO: MOTOR POWER WINDOW DRIVER'S SIDE	9dR	9dK		ON DRIVER'S DOOR	E105
CABRIO: RELAY COORDRIVER SIDE WINDOW	6dM	6dP		IN PASSENGER'S FOOTWELL	D104
CABRIO: RELAY DRIVER SIDE WINDOW	6dM	6dP		IN PASSENGER'S FOOTWELL	D103
CABRIO: POWER TOP				(G21) CE	L/M104
CABRIO: CONTROL RELAY ROOF WITH MICROSWITCHES	14cM	14cM		IN LUGGAGE COMPARTMENT ON FIREWALL	D105-110
CABRIO: DELAYING RELAY	6dM	6dP		IN PASSENGER'S FOOTWELL	E102
CATALYTIC CONVERTER CONTROL (ONLY JAPAN)				(G24) ADDITIONAL CE	D20
CENTRAL ELECTRIC	7bQ	7bQ		LEFT IN WATER BOX	SHEET 6
CLUTCH SWITCH	7dP	7dM		TO FOOT CONTROLS	N44-45
CODING PLUG SOCKET	7dM	7dP		IN PASSENGER'S FOOTWELL	B50
CONTACT UNIT AIRBAG	9bP	9bM		ON STEERING WHEEL	G/H95
CONTROL UNIT ABS	7cL	7cL		IN FOOTWELL, RIGHT SIDE	A94-97
CONTROL UNIT AIRBAG	6cM	7bD/P		IN PASSENGER'S FOOTWELL	K93-96
CONTROL UNIT ALARM SYSTEM/CENTRAL LOCKING SYSTEM	6dM	6dP		IN PASSENGER'S FOOTWELL	D-F65-67
CONTROL UNIT MF+DI	6dM	6dP		IN PASSENGER'S FOOTWELL	O42-50
CONTROL UNIT TRANSMISSION	15cK	15cK		IN REAR RIGHT FENDER	D-G111-112
CONTROL UNIT GONG				(G25) ADDITIONAL CE	K/L19-20
CONTROL UNIT LIFTING ROOF				(G21) CE	H35
CONTROL UNIT LIGHT COMBINATION				(G17+G18) CE	F/G2
CONTROL UNIT P/N LOCK (USA/CANADA)				(G23) ADDITIONAL CE	O119
CONTROL UNIT CRUISE CONTROL	7cR	7cR		IN LEFT FOOTWELL	M44/45
CONTROL UNIT SEAT HEATER LEFT SEAT	10dQ	10dQ		UNDER THE SEAT	O/P25-26
CONTROL UNIT SEAT HEATER RIGHT SEAT	10dL	10dL		UNDER THE SEAT	L21
COOLANT TEMP. SENSOR	4cO	4cO		ON ENGINE BLOCK	B45
COOLANT TEMP. SWITCH AND SENSOR	4dP	4dP		ON ENGINE BLOCK	E/F47
CRASH SENSOR LEFT	7cQ	7cQ		INSIDE FIREWALL LEFT	G95
CRASH SENSOR RIGHT	7cL	7cL		INSIDE FIREWALL RIGHT	G92
DIAGNOSIS PLUG SOCKET	7dM	7dP		IN PASSENGER'S FOOTWELL	M12
DRIVE LEFT HEADLIGHT VERTICAL AIM CONTROL	2cP	2cP		ON HEADLIGHT LEFT	A6
DRIVE RIGHT HEADLIGHT VERTICAL AIM CONTROL	2cM	2cM		ON HEADLIGHT RIGHT	A5
DRIVE LEFT CENTRAL LOCK	11cR	11cR		IN DOOR LEFT	O64-65
DRIVE RIGHT CENTRAL LOCK	11cK	11cK		IN DOOR RIGHT	O67-68
DRIVE CRUISE CONTROL	6cL	6cL		IN ENGINE COMPARTMENT	L44
ELECTRICS ON TRANSMISSION	15/16dP	15/16dP		IN TRANSMISSION	B115-117
FAN MOTOR 1	3cN	3cN		ON RADIATOR	A28
FAN MOTOR 2	3cN	3cN		ON RADIATOR	A27
FLOAT SWITCH BRAKE FLUID	6cP	6cM		IN BRAKE FLUID RESERVOIR	C18
FUEL LEVEL SENSOR	15dN	15dN		IN FUEL TANK	C17
FUEL PUMP	15dL	15dL		ON BASE REAR RIGHT	N46-47
GAS PRESSURE PROP LEFT	15bQ	15bQ		ON TAILGATE	K25

F G H J K L

DESIGNATION, FUNCTION	POSITION IN VEHICLE		NOTE	FIELD IN WIRING DIAGRAM
	LHD	RHD		
GAS PRESSURE PROP RIGHT	15dL	15bL	ON TAILGATE	L26
GENERATOR	3cD	3cD	ON ENGINE	J/K41/42
HALL SENSOR	3cM	3cM	ON TOOTHED BELT HOUSING OVER	B46
HEADLIGHT CLEANERS PUMP (HCS)	6cL	6cL	IN FRONT RIGHT FENDER	A25-26
HEATED OXYGEN SENSOR	2dP	2dP	ON RADIATOR	B45-46
HYDRAULIC UNIT	7dK	7dK	IN FRONT RIGHT FENDER	D/E92
IDLE SPEED POSITIONER	5cD	5cD	IN ENGINE COMPARTMENT	B49
IGNITION COIL	3cL	3cL	WHEEL HOUSING RIGHT FRONT	J45
INSIDE TEMPERATURE SENSOR	8cM	8cP	IN CONTROL PANEL AREA	E21
KICK-DOWN SWITCH	7dD	7dN	TO FOOT CONTROLS	F119
KNOCK SENSOR 1	5cN	5cN	ON ENGINE BLOCK	B47
KNOCK SENSOR 2	5cN	5cN	ON ENGINE BLOCK	B48
MAGNET P/N LOCK (USA/CANADA)	9dN	9dN	AT SELECTOR LEVER SUPPORT	K/L119
MASS AIR FLOW SENSOR	3cP	3cP	IN ENGINE COMPARTMENT	F42
MICRO SWITCH ROOF CLOSED	10aD	10aD	IN ROOF	K40
MOTOR CONCEALED HEADLIGHT LEFT	2dP	2dP	AT LEFT HEADLAMP BODY	D1
MOTOR CONCEALED HEADLIGHT RIGHT	2dM	2dM	AT RIGHT HEADLAMP BODY	E1
MOTOR LIFTING ROOF WITH CONTROL RELAY AND MICRO SWITCH	16dQ	16dQ	IN LEFT BOHLMANN COMPARTMENT	K36-40
MOTOR POWER WINDOW PASSENGER'S SIDE	9dK	9dR	IN PASSENGER'S DOOR	D31
MOTOR POWER WINDOW DRIVER'S SIDE	9dR	9dK	ON DRIVER'S DOOR	D35
MOTOR WINDSHIELD WIPER	7bD	7bN	IN WATER BOX	H/J25-27
OIL PRESSURE SENSOR/ PRESSURE SWITCH	3dM	3dM	ON ENGINE BLOCK BELOW OIL FILTER	F47
OIL TEMPERATURE SENSOR	5cN	5cN	AT CRANKCASE	B44
OUTSIDE TEMPERATURE SENSOR	6cN	6cN	IN HEATER BOX	A23
PARKING BRAKE CONTACT	9dR	9dK	ON HAND BRAKE LEVER	C15-16
PRESSURE SWITCH AIR CONDITIONING SYSTEM	3dQ	3dQ	IN ENGINE COMPARTMENT FRONT LEFT	A24-25
PUMP WINDSCREEN WASH	6cL	6cL	IN FRONT RIGHT FENDER	A26
RELAY ABS			(G22) CE	E99
RELAY AC			(G19) CE	A22
RELAY FOG LIGHT CUTOFF (ONLY JAPAN)			(G26) ADDITIONAL CE	H1
RELAY START LOCK (ONLY AUTOMATIC-TRANSMISSION)			(G20) CE	P44
RELAY DAYTIME RUNNING LIGHT (ONLY CANADA)			(G26) ADDITIONAL CE	L3
SEAT BELT CONTACT	10dD	10dN	TO BELT BUCKLE	C15
SENSOR LATERAL ACCELERATION	8eN	8eN	UNDER THE RIGHT SEAT	E119
SPEED SENSOR / MFI + DI	6cN	6cN	ABOVE FLYWHEEL	B49
SPEED SENSOR CU TRANSMISSION	14dM	14dM	BY TRANSMISSION RIGHT	B114
STARTER	7cN	7cN	ON CLUTCH BELL HOUSING	L42
STOP LIGHT SWITCH	7dP	7dM	TO FOOT CONTROLS	D9
SWITCH TAILGATE UNLOCKING	7dQ	7dL	IN DRIVER'S FOOTWELL	F31
SWITCH COOLING WATER TEMPERATURE	2dP	2dP	ON RADIATOR	A29-30
SWITCH OIL LEVEL WARNING	6eN	6eN	UNDER THE ENGINE ON OIL PAN	F43
SWITCH BACKUP LIGHT	15dD	15dD	(ONLY TRANSMISSION)	D7-8
TAILGATE UNLOCKING MOTOR	18cM	18cM	IN LUGGAGE COMPARTMENT AT END-PANEL	G/H33
TEMPERATURE SENSOR FOR CATALYZER	9eN	9eN	ON CATALYZER	C19
THROTTLE VALVE POTENTIOMETER	4/5cD	4/5cD	ON THROTTLE VALVE ASSEMBLY	B47
TWO-TONE HORN 1	3cQ	3cQ	IN FRONT LEFT FENDER	A39
TWO-TONE HORN 2	3cQ	3cQ	IN FRONT LEFT FENDER	A40
VALVE CAMSHAFT CONTROL	5cM	5cM	AT CYLINDER HEAD COVER	B44
VALVE TANK VENTING	6cQ	6cQ	IN ENGINE COMPARTMENT (ONLY CAT.)	B43

a
b
c
d
e

K
L
M
N
O
P
Q
R

F G H J K L

968 MODEL 93 SHEET 14

PLUG CONNECTIONS, GROUND POINTS, ABBREVIATIONS

PLUG CONNECTIONS

CODE	NUMBER OF PINS	DESIGNATION, FUNCTION	POSITION IN VEHICLE		NOTE
			LHD	RHD	
T1	14	WL PASSENGER COMPARTMENT / WL MFI-DI	6dM	6dP	IN PASSENGER'S FOOTWELL
T2					
T3					
T4	2	BRAKE PAD WEAR CONTACT FRONT RIGHT / COMBI. LEAD	5dL	5dL	LOW ON SHOCK ABSORBER
T5	2	COMB. LEAD RIGHT / WL FRONT (BVA)	6cL	6cL	IN ENGINE COMPARTMENT
T6	2	COMB. LEAD LEFT / WL FRONT (BVA)	6cD	6cD	IN ENGINE COMPARTMENT
T7	2	BRAKE PAD WEAR CONTACT FRONT LEFT / COMBI. LEAD	5dD	5dD	LOW ON SHOCK ABSORBER
T8	2	BRAKE PAD WEAR CONTACT REAR RIGHT / COMBI. LEAD	14dL	14dL	ON SEMI-TRAILING ARM
T9	2	COMB. LEAD RIGHT / WL PASSENGER COMP.	15dM	15dM	} ABOVE DRIVE SHAFTS ON LUGGAGE COMPARTMENT PANEL
T10	2	COMB. LEAD LEFT / WL PASSENGER COMP.	15dP	15dP	
T11	2	BRAKE PAD WEAR CONTACT REAR LEFT / COMBI. LEAD	14dD	14dD	ON SEMI-TRAILING ARM
T12	6	WL HEATER, AIR CONDITIONING / PASSENGER COMP.	7cD/N	7cD/N	IN CONTROL PANEL AREA
T13	7	WL PASSENGER COMPARTMENT / ENGINE HOOD	6bP	6bP	IN ENGINE HOOD
T14	8	SEAT RIGHT / WL PASSENGER COMPARTMENT	11eM	11eM	LOW ON SEAT
T15	8	SEAT LEFT / WL PASSENGER COMPARTMENT	11eP	11eP	LOW ON SEAT
T16	4	REAR WINDOW WIPER, HIGH MOUNTED STOP LIGHT / WL PASSENGER COMP. ONLY COUPE	14cD	14cD	BEHIND C-PILLAR
T17					
T18	12	WL PASSENGER COMPARTMENT / WL PASSENGER'S DOOR ONLY COUPE	7dK	7dR	IN PASSENGER'S FOOTWELL
T18	12	WL PASSENGER COMPARTMENT / WL PASSENGER'S DOOR ONLY CABRIO	7dK	7dR	IN PASSENGER'S FOOTWELL
T19	14	WL PASSENGER COMPARTMENT / WL DRIVER'S DOOR ONLY COUPE	7dR	7dK	IN DRIVER'S FOOTWELL
T19	14	WL PASSENGER COMPARTMENT / WL DRIVER'S DOOR ONLY CABRIO	7dR	7dK	IN DRIVER'S FOOTWELL
T20	8	WL PASSENGER COMPARTMENT / WL SUN ROOF ONLY COUPE	16dD	16dD	IN BOHLMANN COMPARTMENT
T20	8	WL PASSENGER COMPARTMENT / WL POWER TOP ONLY CABRIO	16dD	16dD	IN BOHLMANN COMPARTMENT
T21	14	WIRING LOOM MFI + DI / WIRING LOOM FRONT END	6cP	6cP	IN ENGINE COMPARTMENT
T22	2	CODING PLUG / MFI + DI	6dM	6dP	IN PASSENGER'S FOOTWELL
T23					
T24	2	WL GENERATOR STARTER / WL FRONT END	6cD	6cD	IN ENGINE COMPARTMENT
T25					
T26	19	DIAGNOSIS PLUG	6dL	6dD	IN PASSENGER'S FOOTWELL
T27	12	WL PASSENGER COMPARTMENT / WL PASSENGER'S DOOR	7dK	7dR	IN PASSENGER'S FOOTWELL
T28	12	WL PASSENGER COMPARTMENT / WL DRIVER'S DOOR	7dR	7dK	IN DRIVER'S FOOTWELL
T29	1	ANTENNA AMPLIFIER / WL PASSENGER COMP.	7cD	7cD	BEHIND THE RADIO
T30					
T31					
T32	2	WL ABS / COMBINATION LEAD FR	6cL	6cL	IN ENGINE COMPARTMENT
T33	2	WL ABS / COMBINATION LEAD FL	6cD	6cD	IN ENGINE COMPARTMENT
T34	2	WL ABS / COMBINATION LEAD RL	15dP	15dP	ABOVE DRIVE SHAFTS
T35	2	WL ABS / COMBINATION LEAD RR	15dM	15dM	ON LUGGAGE COMPARTMENT PANEL
T36	2	COMB. LEAD FR / ABS-SENSOR FR	5dL	5dL	LOW ON SHOCK ABSORBER
T37	2	COMB. LEAD FL / ABS-SENSOR FL	5dD	5dD	LOW ON SHOCK ABSORBER
T38	2	COMB. LEAD RL / ABS-SENSOR RL	14dD	14dD	ON SEMI-TRAILING ARM
T39	2	COMB. LEAD RR / ABS-SENSOR RR	14dL	14dL	ON SEMI-TRAILING ARM
T40	6	WL PASSENGER COMPARTMENT / WL ABS	6dM	6dM	IN FOOTWELL, RIGHT SIDE
T41	6	WL PASSENGER COMPARTMENT / WL AIRBAG	6dM	7cD/P	IN PASSENGER'S FOOTWELL
T42	2	WL PASSENGER COMPARTMENT / WL AIRBAG	6cM	—	IN PASSENGER'S FOOTWELL
T43	3	SPEED-REFERENCE MARK SENSOR / MFI + DI	6cN	6cN	ON ENGINE REAR
T44	3	HEATED OXYGEN SENSOR / MFI+DI	6cN	6cN	ON ENGINE REAR
T45	2	WL PASSENGER COMPARTMENT / FUEL PUMP	13dM	13dM	AT TRANSMISSION SUPPORT
T46	10	WL MFI+DI / WL TRANSMISSION	7cM	7cP	IN PASSENGER'S FOOTWELL
T47	21	WL PASSENGER COMPARTMENT / WL TRANSMISSION	7cK	7cL	IN PASSENGER'S FOOTWELL
T48	8	WL TRANSMISSION / ELECTRICS ON TRANSMISSION ONLY M249	15/16dP	15/16dP	ON GEARBOX

F

G

H

J

K

L

GROUND POINTS

FIELD IN WIRING DIAGRAM	
	N15, F44/45
	A15
	A16
	A18
	A19
	P15
	P16
	P18
	P19
	D23
	J27/28, B64
	L22
	N27
	O23
	BC32, HJ86, DP86
	F102, HJ86, DP86
	BC34, E86, L86
	F103, E86, L86
	H38
	M107/108
	G48/49
	A50
	J43
	L/N12
	M63-65
	M68,E/F104
	F82, D82
	B98
	B98
	B98
	B98
	B98
	B98
	B98
	B98
	B98
	B98
	F96
	H97
	J96, O13
	B49
	B45/46
	M47
	F46, G18
	D118, H114, N114, L117
	C115-117

CODE	DESIGNATION, FUNCTION	POSITION IN VEHICLE	
		LHD	RHD
MP I	COVER PANEL	18c0	18c0
MP II	INSIDE FIREWALL ELECTRONICS CHASSIS	7cP	7cP
MP III	INSIDE FIREWALL CABLE TO GROUND	7cP	7cP
MP IV	LONGITUDINAL SUPPORT	3dP	3dP
MP V	LONGITUDINAL SUPPORT	3dM	3dM
MP VI	BODY BATTERY LHD	6cL	—
MP VII	BODY BATTERY RHD	—	16c0
MP VIII	ENGINE BLOCK MFI+DI ELECTRONICS CHASSIS	6c0	6c0
MP IX	CLUTCH BELL HOUSING BATTERY LEAD LHD MFI + DI CABLE TO GROUND	7c0	7c0
MP X	BODY RHD FIREWALL	—	7c0

ABBREVIATIONS

CODE	MEANING	CODE	MEANING
ABS	ANTILOCK BRAKING SYSTEM	MFI + DI	DIGITAL ENGINE ELECTRONICS
AC	AIR CONDITIONING SYSTEM	NO	NUMBER
ADL	ADDITIONAL DRIVING LIGHTS	NTC	NEGATIVE TEMPERATURE COEFFICIENT
CE	CENTRAL ELECTRIC	OP	OPEN
CL	CLOSE	PIN	PIN
CLS	CENTRAL LOCKING SYSTEM	PL	PLUG
CP	CONNECTING POINT	POT	POTENTIOMETER
CU	CONTROL UNIT	RA	REAR AXLE
DEF	DEFROST	RFL	REAR FOG LIGHT
DP	DISCONNECTING POINT	RHD	RIGHT-HAND DRIVE
ESD	ENGINE-SPEED SENSOR OUTPUT	RL	REAR LEFT
FA	FRONT AXLE	ROW	REST OF WORLD
FCU	FREQUENCY CONVERTER UNIT	RR	REAR RIGHT
FL	FRONT LEFT	SA	SAUDI ARABIA
FOG	FOG LIGHT	SCS	COMBINED STEERING COLUMN SWITCH
FR	FRONT RIGHT	SS	SPEED SENSOR
GP	GROUND POINT	TE	TERMINAL
HCS	HEADLIGHT CLEANING SYSTEM	USA	USA
HF	HIGH FREQUENCY	WL	WIRING LOOM
IC	INSTRUMENT CLUSTER	WP	WELD POINT
LED	LIGHT-EMITTING DIODE	WW	WORLDWIDE
LF	LOW FREQUENCY		
LHD	LEFT-HAND DRIVE		

F

G

H

J

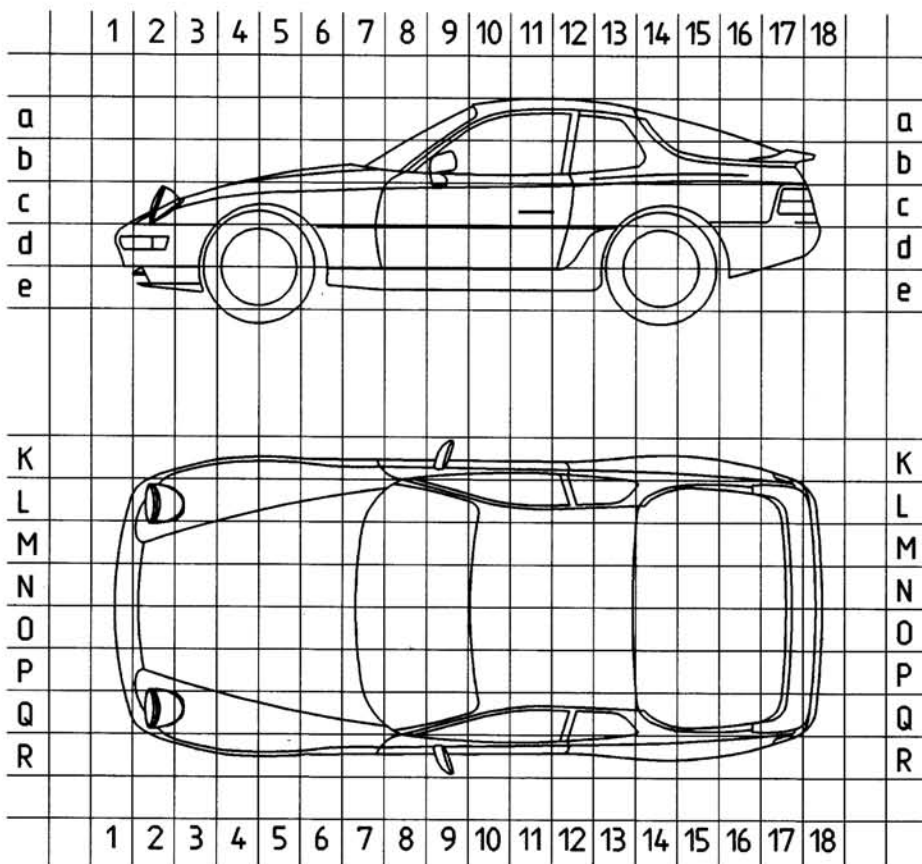
K

L

L M N O P

M - NUMBERS

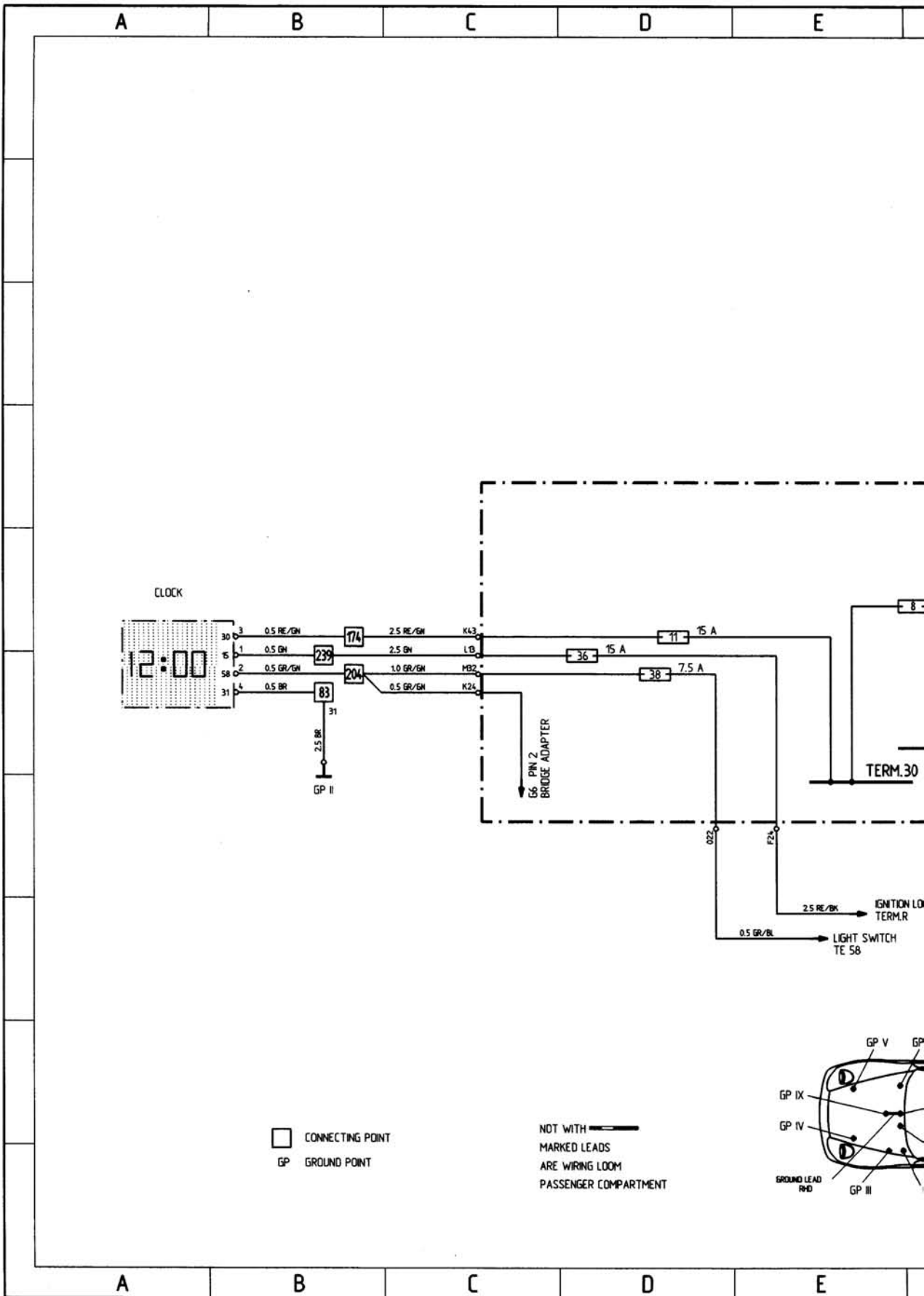
- | | | | |
|-------|---------------------------|-------|-----------------------------------|
| M 113 | CANADA VERSION | M 480 | 6-RANGE-TRANSMISSION |
| M 139 | SEAT HEATER SEAT LEFT | M 484 | USA VERSION |
| M 150 | WITHOUT CATALYZER | M 490 | AUDIO OPTION PACK WITHOUT BOOSTER |
| M 193 | JAPAN VERSION | M 553 | USA - CANADA VERSION |
| M 215 | SAUDI-ARABIA VERSION | M 562 | AIRBAG |
| M 249 | AUTOMATIC TRANSMISSION | M 573 | AIR CONDITIONING SYSTEM |
| M 288 | HEADLIGHT CLEANING SYSTEM | M 605 | HEADLIGHT VERTICAL AIM CONTROL |
| M 340 | SEAT HEATER SEAT RIGHT | M 650 | LIFTING ROOF |
| M 454 | CRUISE CONTROL | | |

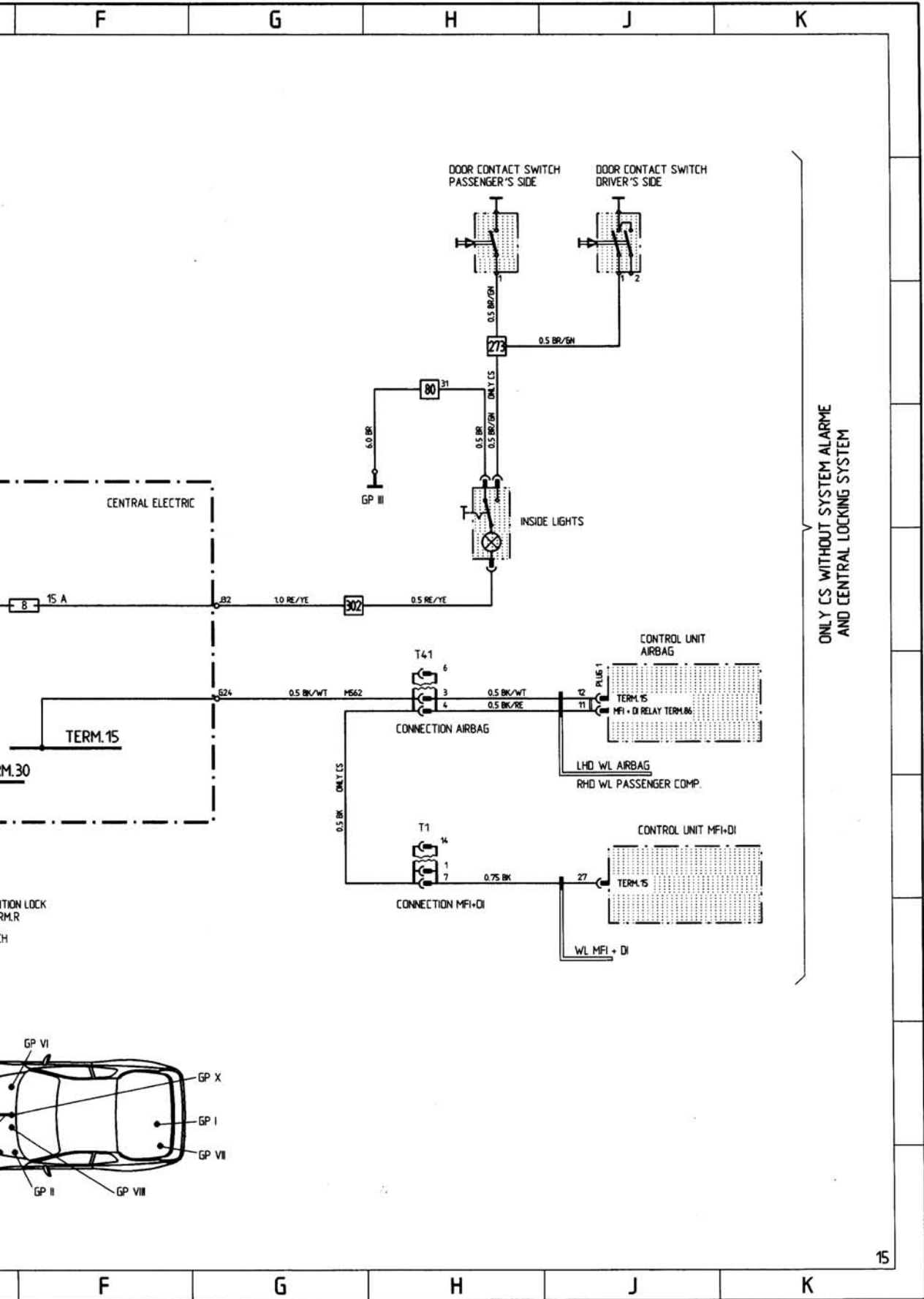


L M N O P

968 MODEL 93 SHEET 15

WIRING 968 CS





ONLY CS WITHOUT SYSTEM ALARME AND CENTRAL LOCKING SYSTEM